

GOLD

CORE RULEBOOK







# BELLUM OMNIUM CONTRA OMNES

*War by all against all.*

## NETEPIC GOLD CORE RULES

*By the NetEpic Discussion Group*

This rulebook is completely unofficial and in no way endorsed by Games Workshop Limited. Warhammer 40,000, Adeptus Titanicus, Space Marine, Epic 40,000, Epic: Armageddon and other names, races, characters, illustrations and images from the Warhammer 40,000 universe are either ®, TM and/or © Copyright Games Workshop Ltd 2000-2005, used without permission and their use should not be construed as a challenge to said ownership. NetEpic is a non-profit work intended for personal use and cannot be distributed with intent of profit. Concepts and ideas not owned by Games Workshop are the property of the NetEpic Discussion Group.











# NETEPIC GOLD CORE RULES: CONTENTS

CREDITS AND LEGAL DISCLAIMER	3	III. THE COMBAT PHASE	32
CONTENTS	5	FIRING RANGED WEAPONS	33
BACKGROUND	6	TEMPLATE WEAPONS	35
PLAYING THE GAME	12	ARTILLERY	35
THE OBJECT OF THE GAME	12	THE EFFECTS OF DAMAGE	37
PUTTING AN ARMY TOGETHER	13	CLOSE COMBAT	39
SETTING UP	15	IV. THE END PHASE	41
I. THE ORDERS PHASE	16	MORALE	42
PLACING ORDERS	16	PSYCHIC POWERS & SPECIAL ABILITIES	43
INITIATIVE	17	TITANS & PRAETORIANS	44
II. THE MOVEMENT PHASE	18	PURCHASING TITANS & PRAETORIANS	44
MOVEMENT SEQUENCE	18	SHIELDS	45
MODES OF MOVEMENT	21	HIT LOCATION TEMPLATES	46
PINNING CLASS	23	REPAIR ROLLS	46
FLOATERS & Flyers	24	APPENDIX A: NORMAL ABILITIES	48
TRANSPORTS	27	APPENDIX B: SPECIAL ABILITIES	50
TERRAIN & STRUCTURES	28	APPENDIX C: EXAMPLE ORDERS COUNTERS	51
STRUCTURE ARMY CARDS	30	APPENDIX D: EXAMPLE BLAST TEMPLATES	53
		APPENDIX E: EXAMPLE ARMY CARDS	57
		GLOSSARY	58



# NETEPIC BACKGROUND

## Background

The long wait is finally over!

What you have before you is the fulfillment of a dream. Over 8 years ago with much determination and enthusiasm the NetEpic project was born to keep the flame of second edition Space Marine lit and everburning. During this time we produced 5 versions of the rules for your use and entertainment.

But something was missing.....

One thing eluded us for all this time. Something we sometimes take for granted, but all appreciate, a full color, well illustrated, entertaining to read (as well as informative) – RULEBOOK. While we have striven to provide you with a coherent, well organized and accessible rules in the form of word and PDF files, these formats lack the inspiring images, illustrations and background stories that some commercially available rulebooks provide.”.

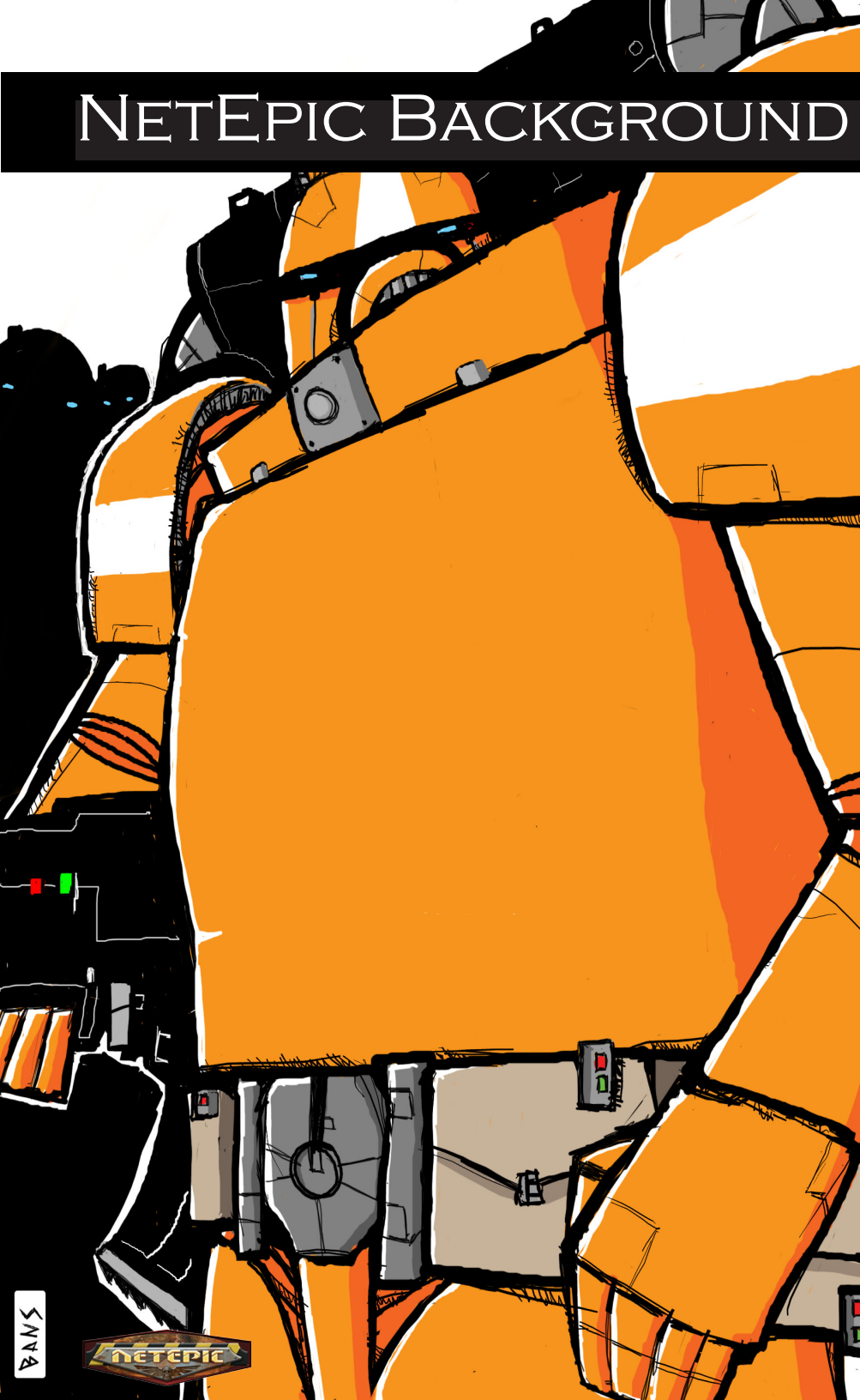
NetEpic Gold is here to fill that need. For the first time the NetEpic rules are available in full color, with cool images, great illustrations and stories to set the mood for your epic battles. No longer do NetEpic fans need to print out reams of lackluster paper with just word processing text! NetEpic Gold is a full fledged e-book intended for you to print and bind just like any other book. Finally NetEpic players everywhere can now show off a great looking rulebook as well as great rules!

In case any of you were wondering, NetEpic Gold is absolutely free, as it should be!

Such a great undertaking owes itself to many fine individuals whose die hard enthusiasm for epic in all its forms made NetEpic Gold a reality.

To all our esteemed editors and proofreaders (with special thanks to Jarreas Underwood and Bruce Scott) to whom NetEpic will have an eternal debt of gratitude for compiling, editing and proofreading the 5th edition revision files which are the foundation upon which this work is based. To you all, my personal thanks as well as the thanks of the many epic players whom had, have and will enjoy the fruits of your endeavors!

I've had the privilege of meeting many fine people in my travels through the internet. One such gentleman also happens to be a heck of an expert on doing layouts and formats for “e-publications”. Christian Salling your work on making NetEpic Gold a reality is beyond my skill to praise with mere words. I can





only look at the finished work with pride and awe. You have taken the building blocks of the rules and files and gave them a life they never had before. I commend you on this most remarkable work!

We have been blessed to get so many talented, enthusiastic people to chip in and work on this project. My Special thanks to Ferran Clavero, the man responsible for all those gorgeous illustrations that adorn the rulebook. He did not merely copy the imagery we are so fond with, but gave his "own take" on how they should look giving our illustrations a fresh unique look. The epic community gives you well deserved THANKS!

Hearty thanks also to Peter Laycock and to everyone else who sent in images, your contributions went a long way in making this book possible!

There would be no "net" in NetEpic with our fearless webmaster Tom Webb. Battling hackers, occasional bugs and a demanding epic community he keeps our webpage running and functional. All our efforts would be for naught if there were no place for people to access what we make available. Indeed I tell you there wouldn't BE a NetEpic if not for our esteemed Tom. A two thumbs up as well for Iain Werry at Tactical Command for offering all epic fans the undisputed hub for all things epic!

To all our esteemed supporters, who through thick and thin have followed these works throughout the years, my heartfelt THANKS! We do all this for your enjoyment. Freely and enthusiastically. You have let us know you appreciate what we do and consider this great work our thanks to you for believing in us.

This work is a testament that motivated gamers can achieve anything!

## **LONG LIVE NETEPIC!**

*Peter Ramos*  
*NetEpic Coordinator*

Please visit the NetEpic website at: <http://www.netepic.org/>  
Or join the discussion group at: <http://groups.yahoo.com/group/netepic/>

## **A Short History of Epic Warfare**

Games Workshop first released Adeptus Titanicus in 1988. It was a game of giant robot combat in the recently released Warhammer 40,000 universe. It was set during a galactic civil war known as the Horus Heresy, when half the human civilization revolted against the other half. You could customize titans and there were crew experience and campaign rules. The game created

a lot of attention, and rules for infantry, tanks and artillery soon followed with the release of Space Marine. It was a bit complex with each 5-man infantry squad having multiple weapons, each firing multiple times. Support and additional rules for the game were published in Games Workshop's magazine White Dwarf. Eventually, everything was brought together in the Codex Titanicus, which refined the rules and introduced Orks and the Eldar (Elves in space). As the game grew with success, other armies from the Warhammer 40,000 universe were incorporated, such as the Imperial Guard, Chaos and Squats (Dwarves in space).

Space Marine 2nd Edition was released in 1991. This removed a lot of the complexity from the basic rules but added a large number of special abilities. Over the next few years, the expansions Renegades, Armies of the Imperium and Ork & Squat Warlords detailed the various armies you could play. In 1995 came Titan Legions, which corrected a few minor errors in SM2 but added very little apart from some nice models. Space Marine 2 would go on to become one of Games Workshop's most popular gaming systems in the 1990s, and is still considered to be a classic. While official support is practically non-existent, many websites host copies of the rules, house rules, articles and army lists. NetEpic derives from Space Marine 2.

By 1997, Games Workshop figured they had done everything there was to do and set out to re-release the game as a new system. The result was Warhammer Epic 40,000, a complete re-write set 10,000 years after the Horus Heresy. The basic mechanics were slightly more complex than Space Marine, but there were none of the reams of special abilities and exceptions so it played a lot faster. On the down side, it had no reams of special abilities and the various races lacked flavor. Even though the system was very original and focused on firepower and the realistic effects of being shot at, the effects of damage were abstract and difficult for a new gamer to get into. The game never really caught on and support for the game was dropped from White Dwarf not long after its release. Adeptus Titanicus II was released in 2000 and updated the giant robot rules. Unfortunately, it did not mesh well with the existing rules (Epic 40k in this case) and also failed to catch on.

When Games Workshop stopped directly supporting the game, one of the subsidiary companies called Fanatic Games took over the line. They made lots of miniatures and released the magazines Epic 40,000 Firepower and Epic 40,000 Magazine. Like the other editions of the game you can find websites supporting the system, but unlike the previous editions you can still find rulebooks and miniatures without a lot of work.

One of the private support groups, the NetEpic Discussion Group, was born on January 16th, 1997, on the old Space Marine majordomo list. It has since moved to the Yahoo Groups website, where it continues to debate the ongoing evolution of 6 mm warfare in the 41st Millennium. You are currently reading the fifth version of the rules.



More recently, Fanatic Games released Epic: Armageddon in the summer of 2004. The rules were straightforward and well-written, freely available from the Fanatic Games website and included massive designer (Jervis Johnson) ↔ player interaction and feedback. However, with the folding of the Specialist Games titles back into the Games Workshop mainline in late 2004/2005, support was dropped and miniatures production placed in doubt. However, even the brief publication of E:A reinvigorated the concept of extensive small scale armies. NetEpic 5.0 is merely the latest step in the history of 6 mm warfare.

## Scale

NetEpic is designed for the 6 mm scale, also known as 1:300 in the UK and 1:285 in the US (which are effectively the same thing). Each model represents one real vehicle or between three and ten soldiers. A suggested ground scale is 25 mm = 100 meters, but in most cases the true scale is pretty irrelevant.

As a note, the terms “ground scale” and “model scale” are two different things. Model scale is a ratio of how big the model is to how big a real-life object would be, e.g. a one-inch model in 1:300 scale would be 300 inches long. Ground scale is the size of the tabletop as opposed to the actual battlefield, e.g. 25 mm on the table might equal 100 meters in real life. Unfortunately, if the two scales were the same then even the lightest weaponry would be able to fire from one end of the table to the other. A model is an indication of where the troops are and what they look like, rather than an actual representation of

their size on the battlefield. This distortion of the scales is necessary to achieve a playable system, and is why a couple of trees can represent a whole wood.

The time scale and length of a turn is fairly loose. Most real combat consists of sudden bursts of frantic shooting, separated by long periods of scouting and cautious movement. Although a game turn might only contain a few seconds of actual fire combat, the full turn may be assumed to occupy several minutes of elapsed time. If it is necessary to determine how long a battle lasts, treat each turn as 30 minutes. Hence a four-turn game would represent a battle lasting two hours, which could be important if either side is attempting to bring up nearby reserves.

*A pale sun was shining through the greasy black smoke covering the skies. The ruins of an old Manufactorum building stretched towards the skies like the skeleton of some gigantic prehistoric monstrosity providing some much needed cover from the Ork shelling. From the turret of his Baneblade Colonel Jacobus watched as the Guardsmen dug into position. Jacobus shook his head. Holding the position was a near impossible task, his battered men ill equipped, outnumbered and outgunned. He dared not even guess how many - if any- would survive the next couple of hours. The enemy invasion had come as a shock to the planetary defence force. Many of the major hive cities had been caught completely off guard before defenses could be mobilized. Millions had died in those first terrible hours... In the horizon he could hear the thunder of guns drawing ever closer. The hour was growing nearer, the scene was set. It wouldn't be long now before all hell broke loose...*





# The NetEpic Universe

Although only modest in size (100,000 light-years across), the galaxy contains around four hundred thousand million stars. Though humanity has explored only a fraction of these by the 41st century, countless millions of systems have been settled and humankind has encountered hundreds of alien races. Unfortunately, not all of them are friendly. In the dark and Gothic future of the 41st millennium there is only war, and peace is only a brief time of preparation before further fighting.

Following is a summary of the existing NetEpic armies. If you want to play an army that does not exist, create it! Write up stats for your units, balance them against those that currently exist, come up with some background and let everyone know about it. While originating from and heavily based upon Games Workshop's Warhammer 40,000 universe, NetEpic has diverged over the years and there are differences. We're always on the lookout for good ideas.

## The Forces of the Imperium:

For tens of thousands of years the Imperium has warred on its enemies. Alien races strike at the frontier systems. Rebellion, Chaos and treachery are commonplace on thousands of worlds. In its perils, mankind has one guide – the Emperor. His rule is harsh and uncompromising, but for millennia he has stood between humanity and extinction. Throughout the Imperium, his will is carried out by two huge organizations: the Inquisition and the Adeptus Terra. The Inquisition is answerable directly to the Emperor and Inquisitors travel freely throughout the Imperium searching out dissent, corruption and untrained psykers.

The many branches of the Adeptus Terra are in charge of everything else, from long-term military strategy to grain quotas on agricultural worlds. In addition to the military branches described below, there are the civil services of the Administratum, the law-keeping forces of the Adeptus Arbites, the sanctioned psykers of the Adeptus Astra Telepathica and the Adeptus Custodes of the Emperor's personal bodyguard.

**Adeptus Astartes:** Better known as the Space Marines, these are the toughest, best trained and best equipped soldiers in the Imperium. Genetic manipulation, surgically enhanced bodies, power Armour and hypno-training allow for centuries of constant warfare.

**Adeptus Mechanicus:** The tech-priests of the Adeptus Mechanicus are best known for their military arms, the four divisions of the Collegia Titanica who operate and maintain the vast war machines known collectively as the Titan Legions. These are immense war machines wrapped in protective Void Shields, sheathed in meters of Armour and carry the most powerful weapons available. Titans are capable of crushing infantry and tanks underfoot like in-

sects. The forces of the Imperial Knights are included here, as are all Imperial Titans. Other Imperial armies may purchase titans and praetorians but the weapon descriptions & hit location templates are only found here.

**Adeptus Militaris:** The Imperial Guard forms the bulk of the mobile military might of the Adeptus Terra. Entire divisions are recruited from a single planet and spend decades defending the Imperium, then allowed to settle a planet of their own. Individual planets raise Planetary Defense Forces to defend against raiders, pirates and rebels. Unfortunately, Imperial edict forbids large concentrations of heavy equipment to prevent successful revolts, and the PDF is merely supposed to hold its ground until reinforcements arrive.

**Adeptus Ministorum:** The Sisters of Battle and the Frateris Militia are the fighting arms of the Adeptus Ministorum – the holy church of the Imperium. Trained to the highest standards, they are utterly dedicated to the protection of the Imperial Faith and scour the Imperium in tireless search of heretics and the faithless.





### Chaos:

The Eye of Terror is a region of space filled with dust-shrouded hell-worlds, warp storms, malevolent extra-dimensional creatures and worse. Preying upon the weak, corrupting the strong and infecting all it touches, Chaos drags the very souls of its victims into the shadowy realm of warp space. The armies of Chaos are many and varied. Sometimes a Greater Daemon leads a corrupted horde of warp daemons and tainted cultists, sometimes the ranks of the ancient Legions Excommunicate Traitoris appear in their everlasting war against the Imperium, and sometimes a rag-tag army of Chaos worshipers rises up in rebellion, calling on the aid of their Chaos patrons to overthrow their oppressors and put them into positions of power.

### Eldar:

The Eldar are an ancient race, having built a vast civilization well before humanity first left Earth. They were corrupted by Chaos and in a vast orgy of destruction, the death of uncountable billions gave birth to the Chaos creature Slaanesh. When their civilization was destroyed, survivors scattered in many directions and have taken widely differing paths to survive. Some Eldar fled their doomed race in gigantic spacecraft called craftworlds. These move between the stars, connected by a web of portals through warp space. Some craftworlds trade peacefully and fight alongside humans and other aliens, others support themselves by hiring themselves out to the highest bidder, and some simply take what they need. Though their appearance is almost human, their motivations are unfathomable and unguessable.



**Exodites:** Not all Eldar remained on craftworlds – some settled new planets. The majority of their technology has been lost, and with no industrial base they tamed various animals and went native.

**Dark Eldar:** Corrupted by Chaos and perverted into a sadistic caricature of their former selves, Dark Eldar raid, plunder, torture and amuse themselves in other amoral and sociopathic ways.

**Eldar Knights:** Long before their counterparts existed in the Imperium, the Eldar fielded these one-man walking machines of destruction. Their numbers have dwindled over the long millennia, but they may still be called upon to aid their brethren.

### Orks:

The Orkoids are a variety of green-skinned humanoids, ranging from the diminutive Snotlings to the ruling Nobz, all with a low level of culture and a brutal, cunning and violent nature. Their main motivation seems to be a natural love of fighting for its own sake, rather than any empire-building aspirations. They will fight any opponent, anywhere, for any reason or for no reason at all – in the absence of an opponent they will just as cheerfully fight among themselves. Their technology is crude and often unreliable and their tactics are simple but effective, relying on numbers and firepower more than strategy. Every two or three centuries the collective psychic energy of the Ork race becomes agitated, disturbed and dynamic. This is Waagh-Ork, a time of tribes coming together, of great works, of migrations, wars and conquests. Eventually this reaches a fever pitch and Ork armies go off in all directions, bringing war to every corner of the galaxy.

### Squats:

The Squats were originally human settlements on high-gravity, atmospherically inhospitable planets. For survival these humans evolved or were genetically engineered (a subject of much debate) into the race now known as the Squats. They are short, strong and resistant to a wide range of physical and atmospheric extremes. Their society has developed into a hard-working, tenacious people with a fierce sense of honor, independence and justice. Their religion is based on a form of Shintoism (ancestor worship), with the spirits of their ancestors watching over them. During the Imperium's Age of Rediscovery, the Squat Homeworlds made several trade agreements which allowed them to keep their independence.

### Slaan:

These are the folks who first seeded humanoid life to this galaxy. Now they've come back to recruit everyone to help fight the Tyranids, whether they want to or not. Teleporting battlemechs, stasis fields and regeneration make these some of the toughest warriors in the game.



**Tau:**

The Tau are one of the few independent alien races able to withstand the might of the Imperium. Their rapid technological development has allowed them to begin carving an empire of their own, in the name of the Greater Good. The Tau army is characterized by high tech equipment, highly mobile battlesuits, sleek Armour, hideously hard-hitting guns and a desperate lack of assault skills. The Kroot are a subservient race that the Tau saved from an Ork invasion. Jungle predators, the Kroot fill in the close assault role the Tau lack.

**Tyranids:**

Bugs – zillions of them. Big, tough and strong enough to tear a man in half. And they're always hungry. These are hordes of huge, fearsome creatures that share a united Hive Mind and devour entire planets, reducing them to airless, lifeless rocks. The Tyranids are fearless, implacable and consume everything in their path. Worry.

*"The Imperial position was the worst one imaginable. The orders were simple: Hold the bridge at all cost.*

*Behind the Imperial trench was a few damaged buildings where most of the command and communications staff had set up headquarters and a narrow road leading down to the bridge.*

*From what Colonel Jacobus could make out the situation looked grim. Messages of front movements indicated that two entire regiments in the northern part of the city had been decimated in the past couple of hours by the Ork onslaught.*

*Battle hadn't reached his position yet but it would come soon enough and when it did Jacobus was only too aware of the exposed position his men was in. They were the last line of defense before the bridge and the cover provided by the buildings made effective artillery support near impossible. Also the risk of hitting the guardsmen's own position was all too real. Jacobus had seen that sort of thing before.*

*Any hope of reinforcements were slim there were none left and the supply-lines to the south had been cut off.*

*They were effectively surrounded.*





# PLAYING THE GAME

## Playing the Game

For starters you'll need a place to play – most games do well in a 4 by 6 foot (125 by 185 cm) space, although larger and smaller areas can be used as resources permit. Terrain will enhance the game but is not mandatory (you can image it's a desert or icy tundra). You'll need a copy of this rulebook, the army books for your respective armies, any necessary templates and a handful of 6-sided dice.

You will also need some way of indicating where your troops are, such as miniatures or paper counters. Although NetEpic is based in the Warhammer 40,000 universe, you are not required to purchase actual Games Workshop miniatures and can use whatever you've got handy.

## The Object of the Game

The default way to win is to be the first player to earn enough Victory Points from killing the enemy and capturing objectives. These rules are highly abstract and the objectives represent unnamed places or things. The winning Victory Point total is dependent on the size of the game being played. At the end of each turn, count up each player's Victory Points. If one player has the required total, he wins.

Each Player's Army Size	Victory Points Needed to Win
1,000 Points	30
2,000 Points	35
3,000 Points	40
4,000 Points	45
5,000 Points	50
Etc.	Etc.

### 1) Killing the Enemy

You can control the battlefield by inflicting casualties on the enemy, making his army ineffective and unable to fight effectively. Army cards have both a Break Point and a Victory Point number on them. When you kill the Break Point number of models from that card, you earn the corresponding number of Victory Points (one VP per 100 points that the unit cost). These points are awarded when the unit is broken, and accumulate from turn to turn.

### 2) Capturing Objectives

Objectives represent defense centers, strategic buildings, supplies and other important locations, each worth 5 Victory Points. To control an objective



you need to have a non-fleeing model within 15 cm of the Objective Marker, and the model must be closer to the objective than any opposing model. If models from both armies are equally distant from the objective it is considered “contested,” and neither player receives Victory Points for it. Models that are pinned in Close Combat, fleeing or on other involuntary orders do not count for holding objectives.

Victory Points from objectives are not accumulated from turn to turn. During every End Phase, determine who has control of each objective and award VPs accordingly. Once captured, an objective remains under control of the capturing player until it is captured by the enemy. It is not necessary to keep one of your models within 15 cm of the objective to retain control from turn to turn.

### Optional Rule: Controlling Objectives

Normally, you merely need to have the closest valid unit to the objective to control it. As an optional rule, you control the objective if you have the only valid units within 15 cm of the objective. This is a small semantic change but has significant battlefield implications.

## Putting an Army Together

Armies are created by purchasing units up to a points total agreed upon by the players. A typical army size is 3,000 – 5,000 points per player. Larger battles are quite possible but beyond about 20,000 points the game tends to take more than a single afternoon.

There are two types of armies – Standard and Codex. Standard Armies are made up of common and readily-available troops and there are no special rules to worry about. Codex Armies have both special units and special rules, and require that you dedicate a minimum percentage of your points to that particular army list. Each of the Army Books describe one or more types of armies, and include all pertinent information such as background, army creation, unit statistics and special rules that apply to that army. Special rules found in an Army Book generally supersede those found here, unless it’s really cheesy or makes no sense.

### Army Cards

Army cards are used to represent the organization and elements of an army. They detail the troops you get, their abilities and points cost, and come in three types: Company, Support and Special. A card can also be Free, which means it doesn’t cost you any points, and it may be Unique, which means you can only have one of them in your army. No substitutions are allowed – you get what’s listed on the card and may not swap one detachment for another, even if they are of equal value.

<b>Company Cards</b>	These represent large groups of common troops and form the core of an army. You may not purchase Support or Special Cards without corresponding Company Cards. There are generally three or four detachments per Company Card.
<b>Support Cards</b>	These represent additional or specialized troops to strengthen your companies. Unless the card states otherwise, each Support Card represents one detachment. You may include up to 5 Support Cards per Company Card in your army.
<b>Special Cards</b>	Special Cards represent rare and powerful individuals or units that can be assigned to your army. You may include one Special Card per Company Card in your army.
<b>Free Cards</b>	You may only take one Free Card per Company Card in your army and it will count against the 5 Support Cards limit, though some may count as Special Cards instead.
<b>Unique Cards</b>	You may take one of a Unique Card (such as the Snakebite Ork Clan) for every full 3,000 points in your army, though personalities (such as Commissar Yarrik) may never be duplicated. Unique Cards usually count as Special Cards.

## Allies

The army you put the most points into is your core army. If you’d like to field more than one army you can pick a single ally and field a force made from their Standard List. Certain races will never ally (like Eldar & Chaos, or Tyranids & anyone), and these restrictions are listed in their Army Books. The amount you can spend on your ally depends on whether your core army is Standard or Codex:





If your core army is...	You must spend...	You can choose allies from...
Standard	50% of your points on it	Any one Standard list
Codex	75% of your points on it	Any one Standard list

Both your core army and your ally force must be legal, independent of each other. That is, at least one Company Card and up to one Special and five Support Cards each. Also, you may not mix and match the Company and Support Cards from different army lists. For example, if you want one of the Support Cards from the Space Marines list, you're going to have to take a Company Card from the Space Marines list. Even if you're running both Space Marines and Eldar, you cannot buy a Space Marine Company and support it with Eldar Prism Cannons.

## The Standard Armies

Army	At least 50% of your points into...	Up to 50% into one Standard List except...
Imperial Knights	Standard Adeptus Mechanicus List	
Space Marines	Standard Adeptus Astartes List	Chaos
Imperial Guard	Standard Adeptus Militaris List	
Chaos	Standard Chaos List	Eldar or Space Marines
Eldar	Standard Eldar List	Chaos
Orks	Standard Ork List	
Kroot Mercenaries	Kroot units from the Tau Army Book	

*Orks! Thousands of them. Jacobus had fought them before and knew that his Guardsmen would be slaughtered if they got too close.*

*"Open fire! Short bursts. Heavy Weapons: Concentrate fire on the Battlefortresses". The first wave of Orks were cut down by lasgun fire but more green-skinned psychotics kept throwing themselves at the Imperial Position. A bulky Stompa the size of a small house appeared from behind the low ridge. Guns cracked and a torrent of fire poured down on the Guardsmen entrenched on the left flank.*

*"Lascannon teams! Stand by to fire on my command. We need to take that Stompa out before it tears Fox company completely to shreds!" Laser fire lit up the trench and smashed into the Ork warmachine but to little effect. A big Ork jumped into the trench in front of Jacobus. In a second he looked into it's evil glowing red eye. The Ork lifted a huge crude axe and roared. ZAP! A well placed shot right between the eyes! Jacobus smiled to himself. He might be getting older but he sure still knew how to fire a Laspostol!*

## Some of the Codex Armies

Army	At least 75% of your points into...	Up to 25% into ...
Titan Legions	Titan Legions & Standard Adeptus Mechanicus Lists	Any one Standard List
Marine Chapter	Chapter & Standard Adeptus Astartes Lists	Any one Standard List except Chaos
PDF	Planetary Defense Force List	Any one Standard List
Sisters of Battle	Sisters of Battle List	One Standard Imperial or Eldar List
Khorne	That Power & the Standard Chaos Lists	Any (or all) of the other Powers, or any one Standard List except Eldar or Space Marines
Nurgle		
Slaanesh		
Tzeentch		
Chaos Marines	That Legion, the Standard Chaos List & the Standard Adeptus Astartes List	
Craftworld	Codex List & Standard Eldar List	One other Craftworld, Knights, Exodites, or any one Standard List except Chaos
Eldar Knights		
Exodites	Exodite List	
Dark Eldar	Dark Eldar List	Any one Standard List except Eldar
Squats	Squat List	Any one Standard List except Orks
Slaan	Slaan List	Any other Standard Lists you want
Tau	Tau List	Any one Standard List
Tyrannids	100% from the Tyranid Army Book	





# Setting Up

**1) Choose your forces.** If you're playing a scenario, first determine which one.

**2) Set up the battlefield.** Identify the borders and place terrain. Players can place terrain in a mutually agreed upon fashion or make use of a random terrain generation table.

**3) Place objectives.** Players alternate placing a total of 8 objectives on the board, no closer than 25 cm from the edge of the board or another objective. For small battles (>2,000 points) use 6 objectives.

**4) Roll to choose sides.** Every player rolls a die, re-rolling ties. The high roller chooses which side of the table to start on and places one Army Card's worth of models onto the table. Players alternate placing units, with the initiative winner setting one aside to be placed last. All fortifications must be placed first. The deployment zone is anywhere more than 40 cm from the centerline of the table, giving a minimum of 80 cm between enemy troops.

**5) Special abilities.** Units that have special abilities (such as Infiltrate) may use them. If more than one player has Infiltrating units, alternate moving detachments with the initiative winner moving the last unit.



## Special Ability: Infiltration

These units are stealthy and able to sneak closer to the enemy before the shooting starts. Infantry and Walker-class units may move double their normal movement rate after setup is complete, and Cavalry & Vehicles may move normally. This move may not bring the unit closer than 5 cm to an enemy model.

## Optional Rule: Hidden Setup

Instead of placing their models on the table in plain sight, players may wish to set up their forces without the opponent being aware of their location. There are several ways to do this, such as placing a curtain across the middle of the table, placing dummy cards on the table, or sketching out the battlefield and marking unit locations.

*"Call up division HQ NOW" Jacobus yelled "We need reinforcements or the sector will fall. I repeat: Blue sector will fa..." A huge explosion ripped through the trench and threw the Colonel off his feet.*

*"Dammit, we're being cut to pieces here! Send me armoured sup..." Jacobus went silent. He was holding the comm link in his hand but not much was left of the rest of the radio and the communications officer carrying it. For a brief second the colonel looked out of the trench trying to assess the chaotic situation. Behind him the his command Baneblade was ablaze. It hadn't survived contact with the Ork onslaught for long, a big and inviting target as it was.*

*A swarm of smaller green orkoids hurled themselves at the heavy weapons platoons set up behind the burnt out wreckage of a Chimera. Gretchins were a race of underlings who worked as servants in the Ork armies. What they lacked in physical stature they more than made up for in sneakyness. As opposed to the bigger orks who would usually just throw themselves against the biggest target in sight, the Gretchin could actually make crude tactics and coordinated attacks. Jacobus had seen other commanders make the mistake of underestimating these creatures.*

*To his right he could see a small group of Orks moving through the rubble. The Guardsmen were being outflanked!*

*"Captain: Order Bravo and Fox companies to abandon their positions. We have to retreat and regroup!"*

*"But sir, our orders are to hold th..." the Captain started before he was interrupted by the Baneblade's ammunition magazines exploding.*

*"I don't care! If we stay here much longer there'll be no one left to follow those orders Captain! Now move out!"*



# THE ORDERS PHASE



## I. The Orders Phase

To bring some order to the chaos of battle, NetEpic uses counters that indicate the actions a unit will be taking for the turn. Examples can be found in Appendix D. The default action is for a unit to stay where it is and fire at the enemy, though some armies have instinctive behavior for units without orders (such as Orks and Tyranids). Details for these units can be found in the appropriate Army Books.

### Placing Orders

Players choose and place an order counter face-down beside each detachment in their army. There are three orders players may give to a unit, and one that may be acquired during the game. If you forget to place orders for a detachment, it cannot move or initiate Close Combat but may fire during the Advance Fire Segment.

A unit's orders are only revealed when it is activated. This keeps your opponent guessing as to what orders the rest of your forces have and produces a nice fog of war effect.

#### 1) First Fire Orders

These units sacrifice movement to gain the advantage of firing early. Units on First Fire Orders may not move, turn in place or initiate Close Combat, but may fire in the First Fire Segment. First Fire Orders preclude getting on or off a transport as the unit cannot move, and unless stated in the transport's description units cannot fire from within a transport.

#### 2) Advance Orders

These units move cautiously and fire later in the combat phase. Units on Advance Orders may move up to their normal movement allowance during the Movement Phase, and fire in the Advance Fire Segment of the Combat Phase. Units on Advance Orders may not initiate Close Combat.

#### 3) Charge Orders

These units sacrifice firepower for speed and the ability to engage the enemy. Units on Charge Orders may move up to double their normal movement allowance in the Movement Phase, but may not make any sort of ranged attacks. Units that are pinned in Close Combat are automatically assumed to be on Charge Orders, but units that are in Close Combat but not pinned (such as a tank fighting infantry) must be given orders normally.



#### 4) Fall Back Orders

This is an involuntary order and is only given to units as a consequence of things that happen during the game, generally by failing a Morale check. These units are running away and may not claim objectives, make ranged attacks or initiate Close Combat. In the Compulsory Movement Phase they must retreat at double normal movement towards their deployment area and away from the enemy. If the unit fails another morale test for any reason, it routs and all models in the detachment are immediately removed from the battlefield.

If a unit on Fall Back Orders is engaged in Close Combat it must immediately make a morale test. If it fails it routs and is destroyed as above, and even if it passes suffers a -2 CAF penalty. A morale check must be made every time a new detachment charges in, even in the same turn.

Order	Movement Rate	Close Combat	Shooting
First Fire	None	Defend only	Snap Fire, First Fire Segment or Advance Fire Segment
Advance	Normal	Defend only	Advance Fire Segment
Charge	Double	May initiate	None
Fall Back	Double, away from enemy	Pass Morale or Rout, then Defend only at -2 CAF	None
No Orders	None	Defend only	Advance Fire Segment

#### Special Rule: Troops & Transports

Units on board a transport and the model transporting them may be given different orders from each other, even for units that are listed as a single detachment. This means a player may give Charge Orders to the transport while giving Advance Orders to the troops on board. Even after they are disembarked, the different troops may still be given separate orders. They still represent a single activation in the movement and combat phases, and must remain within unit coherency.

#### Optional Rule: Transports are Separate Detachments

Detachments that consist of both troops and transport vehicles (e.g. Space Marines and Rhinos) do not need to retain coherency between the different types of units – the transports can head out on their own. The Marines must maintain coherency between themselves, as must the Rhinos, but there may be more than 6 cm between the Marines and the Rhinos.

#### Special Ability: Command

Command units represent leaders and highly-trained people in your army and have abilities beyond those of regular troops. Command units are not given orders, as they may always move double their normal movement (as though on Charge Orders) and fire in the First Fire Segment (as per First Fire Orders). However, Command units who are in or have initiated Close Combat may not shoot, and Command units that Snap Fire may not later move.

**Optional Command Rule:** Many players feel that Command units are overvalued and have slightly restricted their abilities. Command units may either A) move on Charge Orders and fire in the Advance Fire Segment, or B) move on Advance Orders and fire in the First Fire Segment.

#### Special Ability: Independent

Several armies have restrictions on the maximum distance between units, such as the Tyranid Hive Mind Radius and the Ork Nob Command rule. Normal units that are beyond this range have restrictions on their actions. Independent units are not bound by any army coherency restrictions (Command Radius, Hive Mind, Nob Command, etc.), but must keep coherency between the models making up the detachment itself.

On the down side, if an Independent unit is ever placed on Fall Back Orders, it routs immediately and is removed from the board. Some armies impose additional restrictions, and these are detailed in the appropriate books.

## Initiative

After placing orders, both players roll a D6. Whoever scores highest has won the initiative and has the option of moving first or forcing the opponent to move first. In the case of a tie, re-roll only if it is the first turn. If there's a tie on any other turn, the player who lost the initiative in the previous turn now gains the initiative.





# THE MOVEMENT PHASE



## II. The Movement Phase

The winner of initiative may choose to move first or second. That is, the player that won initiative either activates one of his detachments first then alternates with his opponent OR he lets his opponent activate a detachment first then he follows after in alternating fashion.

### Movement Sequence

When it is his turn to move, a player may choose any of his units to activate. The order of movement is not dependant on the orders the unit has. This means a player can activate a unit on Advance Orders, then select a unit on First Fire Orders followed by a command unit or a unit on Charge Orders. This, in combination with revealing the orders only as units are activated, keeps the opponent guessing as to the orders of the remaining units.

#### 1) Compulsory Movement

Before selecting units with standard orders, move all the units that have no choice about where they go. This includes units such as those on Fall Back Orders, the Eldar Avatar, Tyranid and Ork units acting on instinct, and units that Teleport or Deep Strike onto the battlefield (such as Drop Pods). These and other units are detailed in their respective Army Books.

#### 2) Activating Units

Pick a detachment and reveal its orders, then make any desired movement. You do not have to move a unit because of its orders, but once the next detachment has been activated you may not change your mind – commanders do not have the commodity of hindsight in battle! Both players continue to alternate moving detachments until all units have moved.

You may not “pass” on activating a unit until all of your units have been activated, or you choose to leave the rest of your units where they are. In other words, you cannot pass and not move a detachment, then later choose to move after your opponent reveals his plans. However, once you pass you may still activate units to Snap Fire.

No model may end movement closer than 1 cm away from enemy models unless engaged in Close Combat. This avoids unnecessary proximity for firing purposes – if you’re closer than 1 cm to an enemy your opponent should probably give you the extra few millimeters of movement to allow you to enter Close Combat!

**1) Units on First Fire Orders:** Activating a unit on First Fire Orders is usually done to Snap Fire at a moving enemy, but it may be done to gain a tactical advantage (e.g. an obvious order such as, “This artillery battery is on



First Fire Orders. It's your turn to move a unit.").

**2) Units on Advance Orders:** This is usually done to move a unit into a better firing position, or to slowly advance towards an objective while continuing to be a threat to the enemy.

**3) Units on Charge Orders:** These units are actively engaging the enemy in Close Combat, or rapidly advancing across the board. You may engage an enemy even if you can't see it at the start of your movement.

### 3) Enemy Response

**1) Firing at a moving unit:** When an enemy unit is activated and moves, you may respond by shooting at it. This is termed Snap Fire and is detailed below. Any number of your detachments may be activated to Snap Fire in response to a single enemy movement. This is an exception to the "players alternate activating detachments" procedure. You may not Snap Fire at a unit that is activated but does not move.

**2) Firing at a charging unit:** If an enemy charges straight at you, you have time to get off one last, desperate shot. If a unit is on First Fire Orders and is the target of a charge, it may be activated to Snap Fire at the charging unit without the normal -1 To-Hit penalty. Template weapons with no range, like Flamethrowers, may be used as well to fire at a charging unit.

Unit's Orders	Movement it may take...	Your opponent may...
First Fire	None.	Watch it go.
Advance	Move normal rate.	Snap Fire at it as much as he likes.
Charge	Move double rate and engage the enemy in Close Combat.	Snap Fire at it as much as he likes.

### Moving and Turning

Models may turn as often as desired during movement. At the end of movement the model must face the direction of travel but may make a 45° correction. This is generally only important to vehicles and weapons with a restricted arc of fire.



### Special Rule: Snap Fire

Units that are on First Fire Orders may fire at targets of opportunity. When an enemy detachment is activated and moves into sight, you may interrupt its movement at any point and activate one of your units that has First Fire Orders. This means that you cannot make a pop-up attack in order to Snap Fire. Your unit fires at the activated enemy unit with a -1 To-Hit penalty. Casualties are removed and the enemy may continue movement. Snap Fire may interrupt any units that move, including one performing Pop-Up or Fire-on-the-Fly maneuvers.

Titan weapons that Snap Fire do not cause the Titan to count as having fired – the Titan may move and fire other weapons normally. Command units that Snap Fire are not allowed to move later in the turn, nor are Command units allowed to Snap Fire after they have moved. You may not Snap Fire with template weapons or any unit classified as artillery.

You may not fire at any target other than the activated enemy unit, and your entire detachment counts as having fired this turn. If you Snap Fire at a unit that is moving to engage you in Close Combat, you do not suffer the -1 To-Hit penalty.

### Special Ability: Quickdraw

The unit does not suffer the -1 To-Hit penalty when Snap Firing. This may be due to an automated weapon system, an advanced sensors or simply honed reflexes.

### Special Ability: Fire on the Fly

Some units are able to Snap Fire their weapons in the middle of their own movement. These units are able to fire their weapons in the middle of their own movement if they are on Advance Orders. Anywhere along their movement path, models may Snap Fire at any enemy unit they can see. They may not call in indirect fire, Pop-Up or use special abilities other than Fire on the Fly. Units suffer the normal -1 To-Hit penalty for Snap Fire, and no model in the detachment may fire later in the turn.

*Jacobus jumped out of the trench.*

*"This way sir!" the Captain yelled and pulled Colonel Jacobus into a narrow passage between the rubble.*

*"We need to reach Rally Point Omega before the Orks can cut us off from the bridge"*



### Special Ability: Point Defense (X)

This is a variety of light, short-range weapons designed as a close-in anti-infantry defense. This can be a combination of reactive Armour, energized hulls and automated weapons systems, though there are different mechanisms, i.e. Ork Point Defense generally consists of Gretchen with pistols, tied to the hull.

Point Defense systems (the X listed next to the ability) always act as though they were on First Fire Orders no matter what the unit's actual orders are, and may be thought of as a separate unit. They may be used in the Movement Phase in order to Snap Fire at the target of a charge (with the normal -1 To-Hit penalty) or to gun down a Charging enemy (without the -1 penalty), or they may fire in the Combat Phase when the model make it's normal ranged attacks.

All PD attacks have a 360° arc of fire, a range of 15 cm, hit on a 6+ and have 0 TSM. Point Defense may only attack once per turn, but all the dice do not need to be used at the same time or against the same target.

### Optional Rule: Moving Last

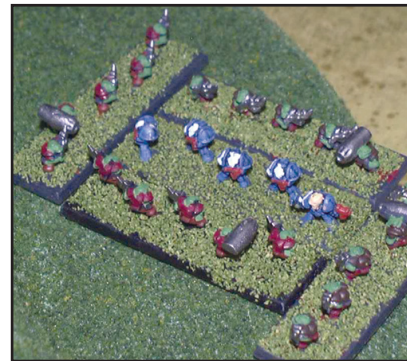
Being able to make the last move is an advantage and should go to the winner of initiative. Because armies may not have equal numbers of detachments, the winner of initiative may select one unit and have it activate last. After the players have alternated moving their units and his opponent has moved any remaining units, the winner of initiative may then make the last move.

### Outnumbering

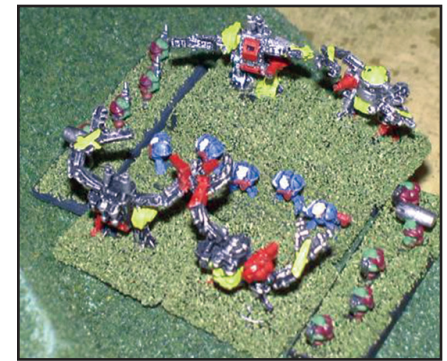
Geometry and base size determines if two units are in base-to-base contact, and therefore in Close Combat. As a general rule, as long as half of either model's base edge touches the other model's base, they're in contact. The illustrations below give some examples of models ganging up on each other, but battlefield conditions are rarely as neat as shown below. If you're unsure if there's room to make contact, roll a D6: 1-3 there is, 4+ there isn't.

### Unit Coherency

All models belonging to a detachment must be within 6 cm of at least one other model of the same detachment. The separate detachments from a Company Card do not need to be near each other – coherency applies only between models that form a detachment. Some units observe special rules and are described in their appropriate Army Books, and individual models which form a detachment unto themselves do not observe unit coherency.



1) Models of the same base size can usually outnumber up to four on one. The Space Marine above is in trouble.



2) The Killa Kans above demonstrate that smaller bases are sometimes more dangerous.

Models that find themselves out of coherency due to casualties or movement must regain coherency in the next Movement Phase. The exception to this rule is units on First Fire Orders that suffer casualties. These models may remain out of coherency so long as they remain on First Fire Orders and do not move. If they are given different orders they must move in such a way to restore unit coherency as soon as possible.

Units that contain creatures that regenerate or are otherwise not immediately removed when they are hit and fail their save do not need to continue to observe coherency with these models – they are considered eliminated until the End Phase. If a creature regenerates and is out of coherency then the entire detachment must move so as to be in coherency at the end of the next Movement Phase.

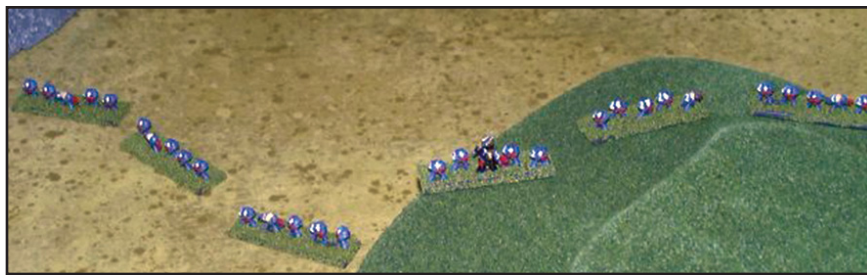
*"Fall back! Fall Back!" The Imperial lines were in disarray and fleeing the battlefield in panic. Behind them green skinned Orks and huge smoke belching war machines continued to pour round after round of battlecannon and bolter fire into the Imperial lines.*

*A Battlefortress equipped with a huge spikey Death Roller were grinding its way through the piles of corpses with a sickening wet sound.*

*"Captain we need to reestablish communications with HQ fast. We cannot match that kind of firepower without armoured support. Get me a Commlink so we can call up reinforcements!"*

*The Captains foot exploded from the impact of a bolter shell and the captain fell screaming to the ground. Jacobus picked him up and continued towards the rally point.*





1) This squad is in coherency.



2) This squad is out of coherency, even though every model is within 6 cm of another one.

*Colonel Jacobus could see rally point Omega now. An old warehouse fortified with plenty of sandbags. The position was better with a small square in front of the building which would provide little cover to any attacker.*

*...But the bridge had been lost.... If Jacobus survived the Ork attack he probably wouldn't survive the ensuing Courtmarshal for failing to obey orders. Almost there. The Colonel jumped into the trench. "Captain, status report" "Red, green and blue are below half strength. Fox company completely destroyed sir". the Captain managed to say between his teeth.*

*Jacobus sent a small prayer to the Emperor. Only a miracle would save them now.*

*Outside the warehouse the remains of the 259th Cadian Rifles continued to set up positions to repel the orks one last time.*

## Modes of Movement

This refers to how a unit moves around, from walking to burrowing up from underneath to teleporting in from orbit. Ground-based movement is assumed, and other modes are detailed below.

**Jump Packs:** Jump-capable troops are equipped with short-burst hover or rocket packs which enable them to leap over terrain, buildings and enemy troops. They can ignore terrain modifiers during movement, but may not end movement in prohibited terrain. Jump troops may not use their Jump Packs to escape Close Combat – they are pinned as normal.

**Skimmers:** These vehicles use anti-gravity motors or vectored thrust engines to move just above the surface of the earth. They may ignore terrain during movement but may not end movement in prohibited terrain.

**Tunnelers:** These units bore through the earth and surface behind enemy lines or close to vital objectives and disgorge troops. Tunnelers start the game underground and may surface anywhere on the tabletop. In any Compulsory Movement a player may declare a detachment of tunnelers as surfacing, and roll a D6. On a roll of "1" the tunneler has met some obstruction and may not surface. On a 2+ the player may pick any spot on the board and scatter D6 x 10 cm. If the surface point is in impassable terrain, the tunneler does not surface and may try again next turn. Otherwise, place all models in the detachment within 6 cm of the surfacing point.

A tunneler may fire its weapons in the Advance Fire Segment on the turn it surfaces. Troops carried should have their own orders independent from their transport (either Charge or Advance in order to get out of the tunneler), and may disembark the same turn the tunneler surfaces.

Once on the board, tunnelers receive orders normally and may move either on or under the ground. In either case they do not double their move on Charge Orders. Tunnelers moving underground can't be engaged in Close Combat (even by other tunnelers) and ignore terrain.

**Tunnelers vs. Buildings:** If a tunneling unit surfaces or moves into a building, the building must make a save at a penalty equal to the tunneler's CAF (i.e. -1 for Termites, -3 for Moles, etc) or be destroyed. The tunneler must then make a normal Armour save at -1 TSM (at -3 TSM if the building was not destroyed) from falling debris. Tunnelers with a hit location template are hit on the front arc. Troops may not enter or leave a tunneler on the turn it attacks a building. Tunnelers that move onto smaller structures such as trenches, minefields, roads and barricades will destroy them with no save, but the tunneler will automatically suffer any effects such as minefield attacks.



**Tunneler Launchers:** Some tunneling detachments come with a transport vehicle, and if this vehicle has line-of-sight to the chosen surfacing point the deviation distance is only D6 x 5 cm. After all tunnelers in a detachment have surfaced, each launcher may act as a Forward Observer for the rest of the game.

**Tunneler Support Card Rule:** Company Cards composed of tunnelers may only buy other tunnelers as Support or Special cards, or infantry units that start the game mounted in the tunnelers

#### Optional Tunneler Rule:

Tunnelers are designed to appear in the middle of enemy formations and use their weapons to clear space around them. The embarked troops then have somewhere to go and may emerge from the tunneler. With this rule, tunnelers may fire all their weapons during the Movement Phase as soon as they appear.

Mode	Terrain Effects	Pop-Ups?	Ends movement at...	Pinned as...
Ground	Normal	No	Ground	Model Size
Jump-Pack	Ignores during movement	No	Ground	Model Size
Skimmer	Ignores during movement	Yes	Ground	Skimmer or Model Size
Tunneler	Ignores while underground	In a way...	Ground or Underground	Model Size

#### Special Rule: Pop-Up Attacks

Pop-Up Attacks consist of a Skimmer on First Fire Orders that rises above some obstacle that impedes line of sight, acquiring a target and firing, then sinking down out of sight. A model making a Pop-Up Attack may trace its line of sight from up to 30 cm directly above its current ground position on the table. It may target models normally from this new vantage point, but models still behind cover remain out of sight (Pop-Up does not give unlimited line of sight, only a better view point for target acquisition). The new line of sight does not extend into forests or similar terrain feature so “popping up” does not grant line of sight to units in the middle of a forest.

A unit making a Pop-Up attack can only be targeted by units on First Fire Orders that Snap Fire, since by the time units on Advance Orders can react the skimmer has descended behind cover and is out of sight. Units that are activated to Snap Fire will resolve their attacks before the Pop-Up attack is resolved. Models that Pop-Up may call in an indirect barrage if they do not fire. A Pop-Up Attack may not be used to Snap Fire.

#### Special Abilities: Teleport and Deep Strike

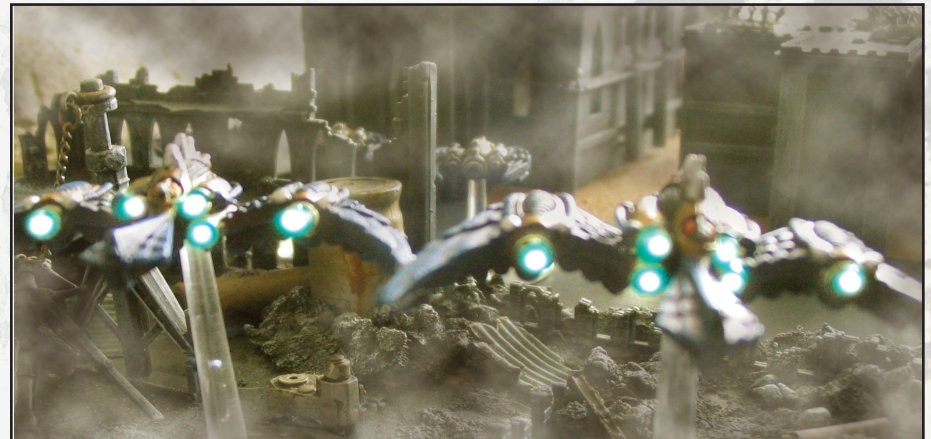
Some units start the game off the board and arrive by teleporting, tunneling, flying in from orbit or being summoned from another dimension. These are all one-time effects, and the units will use their normal movement for the rest of the game. If a player chooses to move one of these units onto the battlefield via Teleportation or Deep Striking, it is resolved in the Compulsory Movement phase. On the turn they arrive the troops must be given Advance Orders and may be activated in both the Movement and Combat Phases of the turn they arrive.

Teleportation is the most accurate method of indirect arrival. When a unit is teleported onto the battlefield, the player picks a spot on the tabletop. Roll the scatter die and move 2D6 cm in the indicated direction, just as for an indirect artillery barrage. This is the arrival point of the first model. The remaining models are then placed anywhere within unit coherency (6 cm) of the first stand.

Deep Striking is a little less accurate. The player picks a location on the tabletop and scatters it 2D6 cm, twice. Once the landing point is determined, place all models anywhere within 20 cm of that point. Then scatter each model 2D6 cm once. This usually results in units that are out of coherency, and they must regain coherency as normal at the end of their first Movement Phase. Anything that lands in impassable terrain is destroyed, and the effects of landing on another unit will vary – see the unit description for details.

#### Movement Off-Table

Models that for whatever reason are moved off the table (due to involuntary movement, scatter die rolls, running away, etc.) are removed from play. These lost models may not rejoin the game and count towards Break Point determination.





# Pinning Class

Pinning refers to the ability to physically restrict your enemy from leaving Close Combat, and is a general indication of size and mobility. That is, large units keep smaller ones from running away. Small models have trouble bringing a larger one into melee as the larger model can simply move away. The only way to force Close Combat with larger class models is to engage the larger model after it has completed its move.

Pinning classes, in order from smallest to largest are:

- 1) Infantry & Light Artillery
- 2) Cavalry & Walkers
- 3) Vehicles & Heavy Artillery
- 4) Superheavy Vehicles & Knights
- 5) Titans & Praetorians

Example: A Warlord titan and a Land Raider tank are in Close Combat. The tank is pinned but the titan is not. The Warlord can walk away during any Movement Phase, but the Land Raider must win or die.



## Special Rule: Skimmer Pinning Class

Skimmers cannot be pinned by units that are not themselves skimmers and at least of the same pinning class, and may move out of Close Combat on their next move (even if their next move is in the same turn). However, if the skimmer decides to stay it is considered pinned for that turn ONLY. That means opponents may not be able to fire at the Skimmer since it is in Close Combat and considered pinned for that turn. If the skimmer survives combat it may move normally next turn.

## Special Ability: Hit & Run

Some units combine their movement and firepower to perform quick, devastating attacks. If a unit with Hit & Run initiates Close Combat this turn and survives, it does not count as pinned during the following movement phase no matter who its opponent is. This option is lost if it is not used – the Hit & Runner does not have the option to leave on the third or later turns. If the unit decides to leave combat it will be pinned normally later in the turn.

## Optional Rule: Overrun

Large units (such as titans) may move over smaller ones (like infantry) and have a chance of killing them on the way. In order to perform an overrun you must be at least two pinning classes larger than your opponent (e.g. tanks to infantry, titans to tanks, etc). Move the attacking model and roll a D6 as you pass over enemy units. On a “6” the target takes a hit with 0 TSM. If the target survives it moves aside (a few centimeters at most) and lets the larger one pass. There is no penalty for this and the overrun detachment does not lose its action (as it does with the Eldar Deathspinner or Eldrich Storm).

## Optional Rule: Zone of Control

You can't just ignore the enemy as you run around the battlefield – if you get too close you either have to run right up to an opponent or risk having them shoot as you pass by. This is known as a Zone of Control and refers to a unit's ability to threaten the nearby area. Units create a Zone of Control that extends for 3 cm around the unit (the size of a barrage template centered on the model). Units that are pinned do not create a Zone of Control.

Units may not enter an enemy Zone of Control at any point during movement unless they meet one of the following requirements:

- 1) The moving unit cannot be pinned by the model creating the Zone of Control. For example, tanks may ignore infantry while moving.
- 2) The moving unit is on Charge Orders and moves directly into base-to-base contact with the model creating the Zone of Control.

Units on Advance Orders must stop 3 cm from the model exerting the Zone of Control, or go somewhere else. If a model is pinned in Close Combat during the Movement Phase its Zone of Control will immediately disappear. This will allow other units to move around it and continue on.

*They came! Across the bridge the first waves of green skinned creatures came running towards the warehouse.*

*“Alpha company open fire!” Jacobus yelled “Blue, green and yellow platoons stand by...” A dreadnought came crawling across the square “FIRE!”*

*Across the river he could see a seemingly endless sea of green faces gathering at the bottleneck of the bridge. There was no way the gardsmen could repel that. As he looked up the black skies were suddenly split by dozens of blue armoured shells falling towards the ground like adamantium drops of rain. Drop Pods! The Adeptus Astartes was here!*



# Floaters & Flyers

These units are capable of atmospheric flight and/or orbital movement, such as helicopters, fighter jets and planetary assault shuttles.

## Altitude

**Grounded:** The unit is either on or very near the ground and not really moving while troops get on or off. It can't actually land in woods, buildings or other impassible terrain, but it can hover over them while troops get off. Trans-

### Special Ability: Floater

Floaters are a relatively slow-moving unit that moves through the air, such as a balloon or zeppelin. They follow the special rules below but otherwise are given orders, move, shoot & activate as regular units.

**1) Altitude:** Floaters may end the Movement Phase at any of the three listed altitudes. Due to their ability to change altitude, these units ignore terrain while moving and may end movement above impassible terrain. Only units with the Transport ability may land.

**2) All-around Firing:** All Floater weapons have a 360° arc of fire. Barrage weapons always fire independently, even from units in the same detachment.

**3) All-Around Armour:** Floaters do not suffer from side or rear Armour penalties.

**4) Shoot the Thin Part:** Floater attacks come from above and always get an additional -1 TSM 'side Armour' bonus. However, they never get a 'rear Armour' bonus, and this bonus only applies against things that suffer from a side or rear-Armour penalty in the first place. Flyers on the ground ignore this rule.

**5) Drop Things:** Some Floaters can drop template weapons during movement, centering the template on the unit's line of movement. The attack is resolved immediately and the flier then keeps moving. Barrage weapons are never combined (like artillery barrages).

**6) Hard Targets:** Only Infantry-class units on First Fire Orders, and AA units may fire at Floaters that are in the air (high or low altitude). Psykers on First Fire Orders may use their abilities as normal.

**7) Objectives:** Floaters may not claim or contest objectives.

**8) Pinning:** Floaters do not belong to any pinning class because while while in the air they cannot be pinned at all – not even by other flyers. If a Flier is on the ground it is considered a Vehicle for pinning other units, but like a skimmer it may choose to break off combat at any time and move away.

ports that are loading or unloading troops cannot fire weapons other than Point Defense.

**Low Altitude:** The unit is somewhere between treetop and skyscraper high, and terrain may block line of sight to it. Floaters, Flyers, Skimmers and Jump-Pack troops can engage the unit in Close Combat. Jump-equipped troops can safely disembark, but not get on. Template weapons may affect the aerial unit or units on the ground, but not both.

**High Altitude:** The unit is a long ways up and has line of sight to virtually everything on the tabletop (except the inner parts of wooded terrain). Likewise, virtually everyone can see it but must add 25 cm to the range when firing at it. Only other Floaters or Flyers can engage the unit in Close Combat. Jump-equipped troops can safely disembark, but not get on. Template weapons may affect the aerial unit or units on the ground, but not both.



### Special Ability: Flier

Flyers are fast-moving aerial units such as attack helicopters and vectored-thrust craft. They follow all rules for Floaters (above) as well as the following rules:

All Flyers are activated as normal in the Movement & Combat Phases. Flyers must move at least half their base move every turn. A flier moves in a straight line between its starting point and its destination. A flyer may rotate to face any direction at the start and end of its move.

Flyers receive the same orders as other units, but these orders have slightly different meanings.

**1) First Fire:** This order causes a flier to land and load or unload troops. The flier moves its normal distance in an evasive pattern, and incoming fire receives a -1 To-Hit penalty. Troops must pay the normal 5 cm to board or exit the flier, but the flier may move its full distance. It remains on the ground until the next turn. Flyers on First Fire Orders cannot fire weapons other than Point Defense.

**2) Advance:** This permits the flyer to fire its weaponry in the advance fire phase.

**3) Charge:** The flyer may engage other flyers in Close Combat (dogfights). A flying unit's base move is not increased by Charge Orders.

**4) Fall Back:** Flyers that fail a morale check will attempt to fly off the table. The player may attempt to rally in the same turn's End Phase, but if failed the flyers rout and count as destroyed.



## Floaters & Flyers (Alternate Rules)

Play testing has shown the current Floater and Flier rules can be unbalancing. The following is an alternate set of rules developed to reduce the near invulnerability Floaters and Flyers have under the standard rules.

### Special Ability: Floater

Floaters are a relatively slow-moving unit that moves through the air, such as a balloon or zeppelin. They follow the special rules below but otherwise are given orders, move, shoot & activate as regular units.

- 1) **Altitude:** Floaters may end the Movement Phase at any of the three listed altitudes. Due to their ability to change altitude, these units ignore terrain while moving and may end movement above impassable terrain. Only units with the Transport ability may land.
- 2) **All-around Firing:** All Floater weapons have a 360° arc of fire. Barrage weapons always fire independently, even from units in the same detachment.
- 3) **All-Around Armour:** Floaters do not suffer from side or rear armour penalties.
- 4) **Shoot the Thin Part:** Shoot the Thin Part: Flyer and Floater attacks come from above and always get an additional -1 TSM 'side armor' bonus when they are at High Altitude. While gaining the benefit of Shoot the Thin Part they do not get a 'rear armor' bonus, and this bonus only applies against things that suffer from a side or rear-armor penalty in the first place. Flyers and Floaters at low altitude or on the ground ignore this rule.
- 5) **Drop Things:** Some Floaters can drop template weapons during movement, centring the template on the unit's line of movement. The attack is resolved immediately and the flier then keeps moving. Barrage weapons are never combined (like artillery barrages).
- 6) **Objectives:** Floaters may not claim or contest objectives.
- 7) **Pinning:** Floaters do not belong to any pinning class because while in the air they cannot be pinned at all – not even by other Flyers. If a Flier is on the ground it is considered a Vehicle for pinning other units, but like a skimmer it may choose to break off combat at any time and move away.

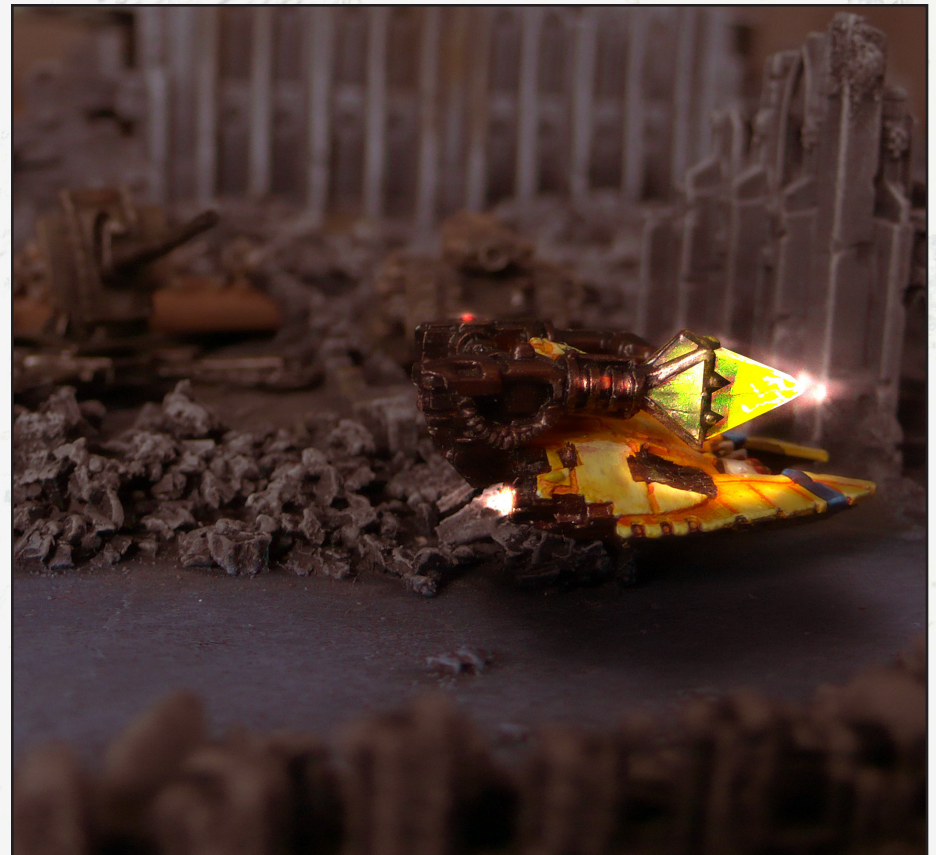
### Altitude

**Grounded:** The unit is either on or very near the ground and not really moving while troops get on or off. It can't actually land in woods, buildings or other impassable terrain, but it can hover over them while

troops get off. Transports that are loading or unloading troops cannot fire weapons other than Point Defense.

**Low Altitude:** The unit is somewhere between treetop and skyscraper high, and terrain may block line of sight to it. Floaters, Flyers, Skimmers and Jump-Pack troops can engage the unit in Close Combat. Jump-equipped troops can safely disembark, but not get on. Template weapons may affect the aerial unit or units on the ground, but not both.

**High Altitude:** The unit is a long way up and has line of sight to virtually everything on the tabletop (except the inner parts of wooded terrain). Likewise, virtually everyone can see it but must add 25 cm to the range when firing at it. Landing flyers do not receive this range bonus. Only other Floaters or Flyers can engage the unit in **Close Combat**. Jump-equipped troops can safely disembark, but not get on. Template weapons may affect the aerial unit or units on the ground, but not both.





### Special Ability: Flyer

Flyers are fast-moving aerial units such as attack helicopters and vectored-thrust craft. They use the following rules:

1) **Altitude:** Flyers may end the Movement Phase at any of the three listed altitudes. Due to their ability to change altitude, these units ignore terrain while moving and may end movement above impassible terrain. Only units with the Transport ability may land.

2) **Front Firing:** All Flyer weapons have a 180° arc of fire. Barrage weapons always fire independently, even from units in the same detachment.

3) **All-Around Armour:** Flyers do not suffer from side or rear Armour penalties.

4) **Shoot the Thin Part:** Flyer and Floater attacks come from above and always get an additional -1 TSM 'side armor' bonus when they are at High Altitude. While gaining the benefit of Shoot the Thin Part they do not get a 'rear armor' bonus, and this bonus only applies against things that suffer from a side or rear-armor penalty in the first place. Flyers and Floaters at low altitude or on the ground ignore this rule.

5) **Drop Things:** Some Flyers can drop template weapons during movement, centering the template on the unit's line of movement. The attack is resolved immediately and the flyer then keeps moving. Barrage weapons are never combined (like artillery barrages).

6) **Objectives:** Flyers may only claim or contest objectives when landed.

7) **Pinning:** Flyers do not belong to any pinning class because while while in the air they cannot be pinned at all – not even by other flyers. If a Flyer is on the ground it is considered a Vehicle for pinning other units, but like a skimmer it may choose to break off combat at any time and move away.

8) **Hard Target:** Flyers are a difficult target to shoot for non dedicated AA units. To represent this only certain units may target flyers, the unit must be on First Fire orders, and it suffers a -1 penalty to hit. The following units may target flyers:

- *Infantry, Cavalry, Walkers, Light Artillery, Knights, Titans*

The following units face the further restriction in that they may only target flyers with Turreted weapons or those listed as having 360 degree arc:

- *Vehicles, Floaters, Praetorians*

All Flyers are activated as normal in the Movement & Combat Phases. Flyers must move at least at least half their base move every

turn. A flyer moves in a straight line between its starting point and its destination. A flyer may rotate to face any direction at the start and end of its move.

Flyers receive the same orders as other units, but these orders have slightly different meanings.

1) **First Fire:** This order causes a flyer to land and load or unload troops. The flyer moves its normal distance in an evasive pattern, and incoming fire receives a -1 To-Hit penalty. Troops must pay the normal 5 cm to board or exit the flyer, but the flyer may move its full distance. It remains on the ground until the next turn. Flyers on First Fire Orders cannot fire weapons other than Point Defense.

2) **Advance:** This permits the flyer to fire its weaponry in the advance fire phase.

3) **Charge:** The flyer may engage other flyers in Close Combat (dogfights). A flying unit's base move is not increased by Charge Orders.

4) **Fall Back:** Flyers that fail a morale check will attempt to fly off the table. The player may attempt to rally in the same turn's End Phase, but if failed the flyers rout and count as destroyed.





# Transports

Several models have the capability to transport troops into combat. It costs a unit 5 cm worth of movement to enter or leave a transport. It also costs a transport 5 cm of movement to have any number of units get on or off, and players can combine vehicle and troop movement in order to load or unload troops. This system is to reflect the time lost or consumed by either the transport or cargo.

First Fire Orders preclude disembarking as units cannot move, and unless stated in the transporting unit description, units cannot fire from a transport. Units may enter or leave a transport that is engaged in Close Combat as long as there is room around the transport for the units to move into. If a transport is completely surrounded, embarked units cannot fight or get out (and do not get a Bail-Out roll, either).

**Example:** Two stands of tactical Space Marines begin the turn embarked within a Rhino. Both the Marines and the Rhino have Charge Orders. The Rhino moves 45 cm then unloads the Marines (costing it 5 cm of movement for a total charge move of 50 cm – exactly right). The Marines have spent 5 cm of movement to leave the Rhino and may move an additional 15 cm (for their total charge move of 20 cm).

**Example:** Two stands of tactical Space Marines begin the turn adjacent to a Rhino. The Marines have Advance Orders (total move of 10 cm) and the Rhino has Charge Orders (total move of 50 cm). The Marines embark (costing both the Marines and the Rhino 5 cm of movement) and Rhino charges 40 cm forward (it has effectively moved a total of 45 cm so far). The Marines then unload, costing everyone the last 5 cm of their movement. The Marines may then fire normally in the Advance Fire Segment.



## Special Ability: Transport (X)

The unit may carry up to X number of infantry stands.

**Towing Light Artillery:** Light Artillery units can be towed as well as move on their own, trading their ability to fire in exchange for an increased movement rate. A transport unit may tow one Light Artillery piece in addition to any transport capability it has. When a unit is towed it is considered to be transported by the towing vehicle and thus subject to the Bail-Out roll. It costs both the artillery piece and the towing unit the usual 5 cm of movement to load or unload the artillery.

**Optional Transport Rule:** Walker-class units (Dreadnaughts, Tinbots, etc.) count as two infantry stands.

## Special Ability: Open Top Vehicle (OTV)

This indicates an infantry transport with an open firing area (such as a pick-up truck) and transported units may fire while loaded. However, any hit on the vehicle will also hit one transported stand (make separate Armour saves), and any template weapon covering the vehicle will also hit all transported units.

## Special Rule: Only Standard Transports are Free

Many army cards contain both combat units and transports. If you purchase a different type of transport (such as Thunderhawks for Marines) and start the game loaded up, you lose the normal transport vehicles. If the troops don't start loaded up they may board the transport on turn one, but must observe coherency between their normal transports. You always lose the normal transports for Drop Pods.

## Optional Rule: Special Cards for Cavalry Companies

If a player purchases an infantry or cavalry company and a Special Card consisting of a single or small group of people, the Special Card may gain the same movement rate as the company for no extra cost. The character is assumed to be mounted in the same sort of vehicle as the company, but all other characteristics (such as Armour Save, CAF and weapons) remain the same.

**Example:** A Major is purchased for an Imperial Guard Land Speeder Company. He gains a 30 cm Skimmer movement rate, but does not gain a Multi-Melta.



# Terrain & Structures

## Terrain

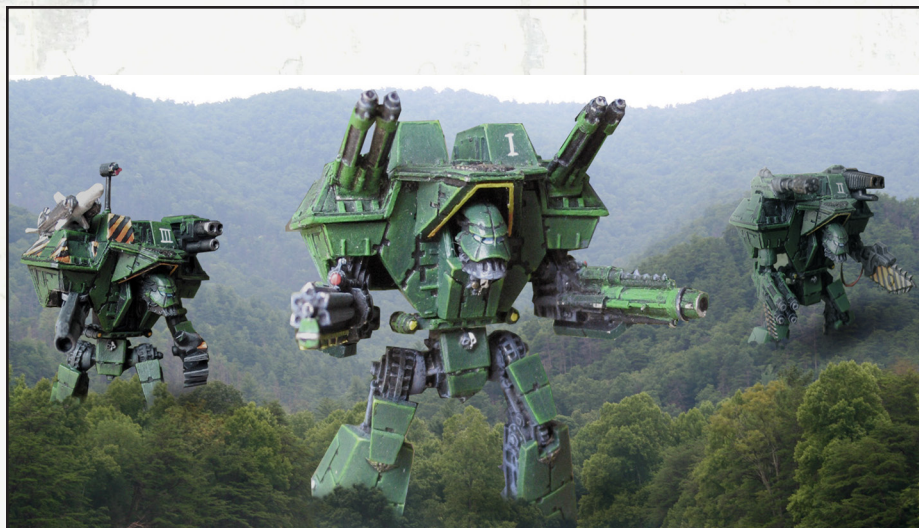
The battlefield presents more challenges than just facing the enemy. Terrain will influence a battle as it provides a barrier that may adversely affect a model's ability to move. The effect of terrain depends on both a model's size and mode of transport, since some modes of transport are more efficient in traversing terrain than are others. It is also harder to target models when they hide, reflected by a To-Hit penalty.

**Forest:** This is thick and heavy vegetation all over the place – light woods, tall grass and brush just can't hide you from the sensors of the 41st millennium. A model that is at the edge of the woods terrain may shoot out and be shot at, but gains the –1 To-Hit protection. Models more than 2 cm into the woods are hidden, cannot be targeted and the only way to get 'em is to send troops in after 'em and go to Close Combat. Troops that are in the woods and on First Fire Orders that get charged by an enemy may still Snap Fire, but suffer the –1 “your opponent is in the woods” penalty.

**Marsh:** Mud, sand dunes or mudflats and shallow water – any ground that heavy things will sink into. There's generally a lot of plant life around and most troops are willing to get dirty in order to gain a little protection.

**Rivers & Lakes:** These are very deep as most vehicles are at least temporarily amphibious.

**Rough:** This category includes ruined buildings, rockslides and junkyards. There are lots of large, solid things around that people can hide behind and vehicles have to drive around.



## Structures

Armies sometimes use structures to aid the defense of their troops and to impede enemy movement. The term is used to cover everything that isn't a terrain feature, from trenches to strongholds. Any army may purchase fortifications, though some assault-oriented armies (like Tyranids) won't have much use for them. Structures are set up before any other units are placed on the table, with at least 5 cm between any two buildings.

If a building or bunker collapses then all units inside are destroyed with no save (yes, some things aren't killed by being buried under tons of rubble, but they're still out of the current battle and that's what counts).

**Roads:** Roads allow ground units to move more quickly across the board. There is no penalty to enter or exit a road, and for every 5 cm you move on a road you may move an extra 1 (20% bonus). Only ground units get this benefit – jumpers, skimmers & Flyers don't. Any unit taking advantage of the road movement bonus are said to be in “Road Mode” and are more subject to enemy fire. All units firing directly at a model in Road Mode receive a +1 bonus To-Hit. It is possible to move on a road without being in Road Mode.

**Barricades:** These are anything that gets in the way of running straight at the enemy, including spiked logs, razorwire, mutant thornbushes and other things that prevent you from moving fast. They provide no cover and do not block line-of-sight. Infantry, Cavalry, Walkers & Vehicles must be on Advance Orders to move through them, while anything bigger (and anything in the air) can ignore them.

**Minefields:** These are fields of both passive explosives and proximity-sensitive “jumping” mines that attack models trying to pass by them. Any model (except Flyers at high altitude) that moves over or through a minefield will be hit on a 4+ at –2 TSM. Superheavies and units with a hit location template are attacked D6 times. A model will not be attacked if it remains unmoving in the middle of a field, but will be attacked if it attempts to leave.

**Trenches:** The term “trench” encompasses a wide range of non-enclosed fortifications that offers protection to infantry. A trench includes small shelters, wire barricades and tank traps as well as actual holes in the ground. They provide a –2 To-Hit bonus to units inside but do not block line-of-sight. Infantry, Cavalry, Walkers & Vehicles must be on Advance orders to move through them, while anything bigger (and anything in the air) can ignore them. Units on Charge orders may enter a trench but may not leave in the same turn.

**Infantry Bunkers:** These protect up to two Infantry and Light Artillery from enemy fire. Units on Advance Orders may fire the turn they enter or leave the bunker. Both the protection provided and the arc of fire are 360°.

**Artillery Emplacements:** These may hold one Vehicle or Heavy Artillery (or any smaller model), which may fire in the 180° front arc. Protection is



for the front and side arcs, but not from the rear. Vehicles may not turn and must be on Advance orders to back out of the bunker.

**Composite Bunkers:** These are Artillery Emplacements with an attached Infantry Bunker on top.

**Strongholds:** These are heavily fortified complexes that provide significant protection and firepower for the defending army. One non-plasma titan weapon (see the Titan Legions Army Book) may be mounted on a turret for the regular cost of the weapon. The weapon has a 360° arc of fire but does not benefit from the building's protection. There is no To-Hit penalty for targeting the weapon but you do have to make your To-Hit roll as normal, and it has a 1+ Armour Save. Victory Points for a Stronghold with a weapon are calculated as for titans (cost divided by 100, rounded up).

A plasma weapon may be mounted at double cost. The extra cost represents the expense and rarity of plasma generators. If a Stronghold with a plasma generator is destroyed it will explode, forcing every unit within 3D6 cm to make an unmodified save or be destroyed.

**Buildings:** These come in all shapes and sizes, from apartment blocks to stadiums and warehouses. There are three grades of construction, from light apartment buildings to heavily defended shelters. Bunkers have been designed to allow Light Artillery to fire normally, but buildings have not. Light Artillery may not fire the turn it enters a building, but may leave and fire normally on Advance Orders.

When a unit is inside a building, the building itself may block the line of sight to some targets. This must be determined on a case-by-case basis, and players must use common sense when deciding if a unit may fire at a target or not. Bunkers and Strongholds never block line of sight for units inside.

**Light Construction:** Things that are delicate, poorly constructed or have obvious weak points, like suspension bridges. Light buildings tend to be taller than anything else.

**Standard Construction:** Your everyday 40k-era plasteel & ceramicrete building. They're not built for combat but will serve adequately, as most Cold War-era Soviet construction demonstrates rather nicely.

**Fortification:** These are built to withstand combat-level damage: strongholds, bunkers & the like.

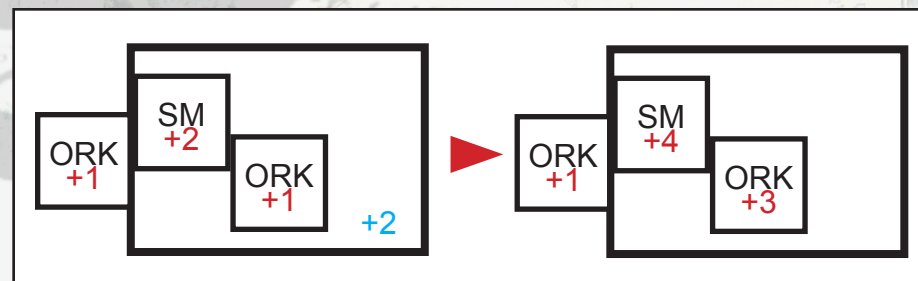
### Structure Characteristics

**Entering & Leaving:** It costs 5 cm of movement to enter or leave a building, in addition to the movement required to get there. Infantry and Light Artillery may enter and fight in structures normally. Cavalry and Walkers may engage things inside in Close Combat but may not actually enter. Larger units may only shoot at things inside.

**Armour Save:** Buildings always roll 2D6 and add them, trying to get their Armour Save number or more.

**Protection:** Things inside are harder to hit than things outside and gain a To-Hit modifier. Buildings also grant a CAF bonus to all units that are inside, both attackers and defenders. Template weapons will automatically hit buildings, and you first roll to see if the building falls down. If it doesn't, roll to hit all units underneath the template with the appropriate To-Hit modifier.

**Example:** Two Orks (CAF +1) are assaulting a Marine (CAF +2) in a Standard Building (+2 CAF modifier). Both of the units that are in the buildings receive the CAF modifier, illustrated in the picture below. Close Combat is then resolved as normal.



**Resistant To Damage:** If you aim at a building (as opposed to units inside), you automatically hit. However, most weapons can't hurt buildings – only artillery and weapons listed as “Damages Buildings” or “Destroys Buildings” will force an Armour Save. Buildings cannot be engaged in Close Combat. If you want to destroy a lot of buildings, use Engineers.

**Structural Integrity:** This represents how many times you have to hit a building before it falls down. Buildings that are damaged but not destroyed have a chance of falling down on their own. Every time a structure fails an Armour Save, give it an SI counter. In the End Phase roll a D6, and if it's equal or less than the number of SI counters, the building falls down.





**Special Ability: Damages or Destroys Buildings**

Non-artillery weapons that are listed as “Damages Buildings” will force a building to make an Armour Save and inflict one SI point if the save is failed. A buildings hit by a “Destroys Buildings” weapons must make an Armour Save or be destroyed, no matter how many SI points it has.

**Special Rule: Destroying Barricades, Trenches & Minefields**

Barricades and Trenches, unlike other buildings, cannot be destroyed by artillery. They may be destroyed by Engineers, “Damages/ Destroys Buildings” weapons or by anything the scours a large section of ground. This includes Deathrollers, Gorgon blades and passing titans & praetorians. These units do not need to have any special orders to remove the obstacle – they just take it out on the way past.

Minefields are cleared in the same way, but the clearing unit will suffer D6 automatic hits. Providing the unit survives, it will clear a path through the minefield as wide as the model.

Terrain	Infantry & Light Artillery	Knights, Cavalry & Walkers	Vehicles & Heavy Artillery	Titans & Praetorians	To-Hit Modifier
Forest	Normal	Half Speed	Half Speed	Normal	–1
Marshes	Half Speed	Impassable	Impassable	Impassable	–1
Rivers & Lakes	Impassable	Impassable	Impassable	Normal	None
Rough	Normal	Half Speed	Half Speed	Normal	–1
Roads	+20% for ground units, Normal otherwise.				(+1)
Barricade	Must be on Advance Orders to pass.			Normal	None
Trench	May enter on Charge, Advance to enter & leave.			Normal	–2
Minefield	Normal movement, but hit on 4+ at –2 TSM.			D6 attacks	None
Light Building	Costs 5 cm to enter or exit.	May engage units inside, but may not actually enter.	Impassable	Impassable	–1
Standard Building			Impassable	Impassable	–2
Fortification			Impassable	Impassable	–3

Structure	Construction	Save (2D6)	Protection	Structural Integrity
Road	Light	6+	None	1 per 5 cm piece
Barricade	Light	6+	None	1 per 5 cm piece
Trench	Standard	4+	–2 To-Hit / +2 CAF	1 per 5 cm piece
Minefield	Light	6+	None	1 per 5 cm piece
Light Building	Light	6+	–1 To-Hit / +1 CAF	1
Standard Building	Standard	4+	–2 To-Hit / +2 CAF	1–2
Infantry Bunker	Fortification	2+	–3 To-Hit / +3 CAF	1
Artillery Emplacement	Fortification	2+	–3 To-Hit / +3 CAF	1
Composite Bunker	Fortification	2+	–3 To-Hit / +3 CAF	2
Stronghold	Fortification	2+	–3 To-Hit / +3 CAF	3

**Structure Army Cards**

Type	Contents	BreakPoint	VictoryPoints	Cost
Road	100 cm	50 cm	1	100
Barricades	100 cm	50 cm	2	150
Trenches	Five 3x10 cm trench sections	3	2	150
Minefields	Five 5x10 cm minefields	3	2	150
Infantry Bunkers	Five Infantry Bunkers	3	2	150
Artillery Emplacements	Five Artillery Emplacements	3	2	150
Composite Bunkers	Five Composite Bunkers	3	3	225
Stronghold	One Stronghold & weapon	Building	Varies	100 + weapon



The first drop pods touched down. "Get down" Jacobus ordered just before the pod's Deathwind cargo was unleashed. The air exploded with burning plasma and hundreds of Orks roared out in pain and surprise.

Jacobus looked up and watched the first of the Marines disembark from their drop pods, laying down a curtain of bolter fire on the Orks. Each marine was almost 3 metres tall and wearing armour which wouldn't look out of place on a battle tank. He looked in awe as the Emperor's Finest formed a formation. A small blue island in a sea of green.

Two Thunderhawk gunships roared above and jump pack equipped Marines disembarked, slowly descending to the ground below catching a small group of orks in a deadly crossfire.

"Alright men, lets give them some supporting fire" Jacobus ordered. Not that it really seemed necessary anyway. The Marines were cutting a bloody path through the Orks towards the position the Imperial Guardsmen had abandoned just minutes earlier.

"Bravo Company! Charge!" Colonel Jacobus jumped out of the trench and charged towards the Manufactorium across the bridge where Marines and Orks were now locked in deadly hand to hand combat. Jacobus watched as three

huge Orks jumped a single Marine. A Sergeant grabbed one of the orks and squashed it's head with a powerfist while cutting another in half with his chain-sword.

Jacobus looked in sheer amazement. as the Marines were clearing the trench. Their precision and speed was incredible severed ork limbs literally flying left right and centre, cut off by Bolter fire, Chainsword or torn from their sockets by Powerfists the size of a large man's chest.

What true wonder of the Emperor that such men were fighting for the Imperium, though Jacobus couldn't help feeling uncomfortable at the thought of what unnatural experiments had resulted in such perfect soldiers.

As the Guardsmen reached the trench the fight was almost over. The remaining orks were completely demoralized by the Marines brutal shock attack and fled the position in panic.

Jacobus found the Sergeant whose powerarmour was now completely covered in green Ork blood.

"Colonel Jacobus, 5th Battalion Cadian Rifles at your service" he introduced himself.

"Very well. Brother Sergeant Nicodemus, Ultramarines 3rd Company. It seems you have an Ork infestation in your foxhole Colonel..."





# THE COMBAT PHASE



## The Combat Phase

By this time all movement should be resolved, as well as reactions such as Snap Fire. In each of the three combat segments players alternate activating all units whose orders allow them to act, with the winner of initiative always acting first in each segment. The three segments are:

**1) First Fire Segment:** Players resolve the ranged attacks for all detachments that are on First Fire Orders. These units have three options, with Skimmers gaining a fourth. You do not have to choose what the unit will do until it is activated.

Option	Description
Attack	The unit may make its normal ranged attacks.
Hold Fire	The unit is given an Advance Orders counter. It may not move, and will wait until the Advance Fire Segment to make it's ranged attacks.
Pop-Up	A Skimmer that is on First Fire Orders may be activated and make a special attack. It will "pop-up" into the air (usually from behind cover) and fire at the enemy, then drop straight back down.
Snap Fire	The unit may fire at an enemy that has come into view due to the other player performing a Pop-Up attack. As in the Movement Phase, any number of units may Snap Fire at the same target. If the target survives it may continue moving.

**2) Close Combat Segment:** Players alternate choosing and resolving a group of models that are involved in a Close Combat. The combat is resolved for all units involved in that fight, and then the other player picks which fight to resolve next.

**3) Advance Fire Segment:** Players alternate activating the rest of their units. Their only option is to make their normal ranged attacks, as everything else has been resolved. Units that were not given orders may be activated to fire now. If a model was charged and fought in Close Combat, it may not fire (however if other models in the same detachment were not engaged, they may fire).



## Firing Ranged Weapons

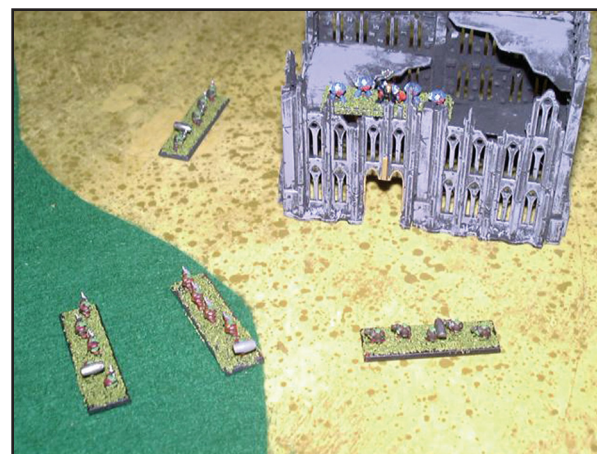
Select a detachment to fire and follow the steps below. Models in base contact with enemy units may fire out of the Close Combat engagement if they are 2 or more pinning classes larger than the largest enemy unit they are in base contact with. Once the detachments fire has been resolved, your opponent selects a detachment and follows the same procedure. Players continue to alternate until all units eligible to fire in the current segment have done so.

**1) Assign Attack Dice:** Each die may be given a separate target, so you can spread your fire around or concentrate on one target. Units with multiple weapons and weapons with multiple dice may spread the dice among different targets. You may assign dice to targets that are engaged in Close Combat if they are 2 or more pinning classes larger than the largest unit they are in contact with, however if a unit chooses to do so the Cold Blooded special rule will apply.

**2) Check Range:** You can't pre-measure so check anything in doubt. If the target is out of range, you miss. All measurements are made from the center of the firing model to the center of the target model.

**3) Roll To-Hit:** Roll the dice, and you hit on a modified score equal to or over the shooter's To-Hit value. A roll of one always misses regardless of modifiers.

**4) Resolve Damage:** See **The Effects of Damage** for details on what happens, as the rest of this section is concerned with special rules. In general, armour saves and special abilities that affect damage must be used immediately, since when a casualty is removed from the tabletop it has no further effect on the game. Yes, this means that units can be killed before they are activated to fire.



*In the illustration, the Space Marine can see and may fire at the Ork to the left and the one at the edge of the woods (suffering a -1 To-Hit penalty), but not the one around the corner of the building.*

*Nobody can see the Ork in the bottom left corner, as there's more than 2 cm of woods between him and anyone else.*

### Line of Sight (LoS)

Models may only fire at things they can see (artillery has its own special rules). Sometimes it may be better to get a model's eye view to better appreciate line of sight, but the rule of thumb is that if you can draw a line from the center of the attacking model to the center of the target model, there is line of sight and you can fire. Large targets (those with a hit location template) may be targeted even if less than half the model can be seen – if a hit location can be seen it can be shot.

Terrain may either block line of sight completely, or provide some cover to your target (such as units in buildings). If a terrain piece looks unclear, you should talk with your opponent before the game to clarify things. This is a gray area, so use common sense and fairness to determine if models can see each other. If the players can't agree, roll a D6 – on a 1-3 there is LOS, on 4-6 there isn't. Of course, if you can see your target he can see you.

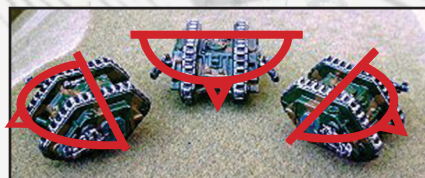
More than 2 cm of wooded terrain will block line of sight, but less than that (e.g. models on the edge of a wood) merely gain the -1 To-Hit cover advantage. Units within buildings and fortifications may see out through any edge they touch, but not through the building itself. Units block line of sight to any unit of their pinning class or smaller – you can see tanks behind infantry but you can't see tanks behind tanks.



## Firing Arc

Firing arcs are the areas around a model that can be hit by the model's weapons. Models have the following firing arcs, with exceptions noted in the unit's description.

Unit or Weapon Type	Arc of Fire
Infantry Light Artillery Cavalry Walkers	360°
Turret-mounted weapons Point Defense	
Flyers, Floaters and things in the air	180° to the front
Vehicles / Knights Heavy Artillery Flyers on the ground	
Superheavies Praetorians Titans	



### Special Ability: Anti-Aircraft

These weapons have been designed to quickly track and engage fast-moving aerial targets. AA units or weapons may Snap Fire at no penalty, gain a 360° arc of fire and suffer a -2 To-Hit penalty for firing at small ground targets (such as infantry and tanks - things that aren't buildings or don't have a hit location template). Skimmers, and jump troops that Deep Strike or leave a flying transport, are considered aerial targets.

### Special Ability: Sniper

Some units are especially keen in identifying enemy commanders and eliminating them. To assign attack dice to a Headquarters unit, the player must first roll a D6 for each Sniper that attempts to target an HQ unit. On 4+ the Sniper identifies the stand and may shoot at it, otherwise they have to shoot at some other target.

### Special Ability: Hard to Hit

All ranged weapon fire at the unit suffers a -1 To-Hit penalty. This does not apply to template weapons.

### Special Ability: Ignores Cover

The weapon ignores cover modifiers To-Hit, such as from woods or fortifications.

### Special Ability: Headquarters (HQ)

These units represent a small number of important people, and as long as they stay close to something their size they receive some protection from being fired at. An HQ unit may not be fired at unless it is the closest valid target of their pinning class, or is more than 10 cm from things in their pinning class. This protection applies to template weapons as well – the template may not cover the HQ unit unless it meets one of the two requirements. However, buildings and transports are not protected – you may shoot at the building or transport normally, hoping to bring it down and kill the HQ inside.

**Example:** An infantry HQ stand in a group of other troop stands cannot be targeted unless it is the closest target within range. An infantry HQ stand among Titans will stand out like sore thumb, so it may be targeted.

### Special Ability: Stealth

These units are skilled at using cover and not being seen. If they are in terrain that grants any sort of To-Hit penalty they cannot be seen at a range of over 25 cm. In other words, if the firer is not within 25 cm then he can't shoot at the Stealthy unit. Barrages that cover a valid target and "happen" to catch the stealthy unit are acceptable. Stealth is negated until the End Phase if the Stealthed unit makes a ranged attack or is engaged in Close Combat.

### Special Rule: Cold Blooded

Chaos, Dark Eldar, Orks and Tyranids may fire into Close Combat since they do not mind slaying their own troops. If you fire into Close Combat and miss your target, make another To-Hit roll against one of your own troops. Template weapons are used normally, making separate To-Hit rolls against every single unit under the template, friend or foe.

### Special Rule: To-Hit Roll Greater Than 6

Various modifiers such as Snap Fire and cover may require a To-Hit roll greater than 6. It is still possible to hit the target and the following system is used: for every 6 rolled an extra D6 is rolled. A roll of 4 on the second D6 equals seven, 5 equals eight and another roll of 6 equals a nine!

To-Hit Roll	You need to roll a...
7	6 then a 4+
8	6 then a 5+
9	6 then another 6 – good luck!



# Template Weapons

When using a template weapon, place the template and make a separate To-Hit roll against each unit that is more than half under the template. If you're unsure, roll another D6 and on a 4+ it's attacked. Some template weapons have no range – flamethrowers for example. The small end of the template must touch the firing model and the entire template must be within the model's arc of fire. If a template weapon is fired at a model with a hit location template, treat it as any other shot – roll To-Hit, deviation and Armour save normally. See Appendix D for sample templates.

Template Name	Used For...	Description
Standard Barrage	Artillery, Vortex, Tzeentch Bolt of Change, Aura of Slaanesh, Firelord Bomb	A circle 6 cm in diameter
Large Barrage	Gutbuster Explosive, Large Pulsa Rokkit, Land Train Bomb, Large Airburst	As Standard Barrage but 12 cm in diameter.
Large Teardrop	Flamer, Firethrower, Hellhound, Bowelburna	A half-circle 6 cm in diameter with a triangle attached, 25 cm long
Small Teardrop	Nurgle Vomit, Stream of Corruption, Scorcher, Warp Spider Death-spinner	As Large Teardrop but 5 cm diameter and 10 cm long.

## Artillery

Artillery is a general term used to describe weapons that are capable of both direct and indirect fire. An artillery unit is normally referred to as a battery, and consists of three to five launchers. Artillery weapons have several special rules, such as combining and indirect fire. Any weapon that lists a number of Barrage Points (BP) instead of a number of Attack Dice will use the 6 cm barrage template.

### Combined Fire

Instead of a fixed To-Hit value, most artillery units combine their fire to become more effective. All fire from an artillery detachment must be concentrated into one barrage template. Exceptions to this are usually stated in the unit description, but the requirement to combine Barrage Points is also denoted in a units statistics by the use of the @ symbol after their Barrage Point value. As the detachment sustains casualties, the effectiveness of the fire will be likewise reduced. The To-Hit roll is determined by the total number of barrage points making up the template:

Total Barrage Points	To-Hit Roll
1 – 2	6+
3 – 4	5+
5 – 6	4+
7 – 8	3+
9 or more	2+



### Indirect Fire

Artillery units have several ways in which they may fire. As with other units, they may fire their weapons directly at an enemy they can see – this is direct fire. Artillery may also fire at a target that a friendly unit can see – this is indirect fire as the artillery unit itself need not have line of sight to the target.

**Direct Barrages:** An artillery detachment may place its barrage template anywhere within range and line of sight. After the barrage template is placed roll to hit every model at least half covered by the barrage template. If there is any doubt as to whether a model is underneath, roll a D6 and on a 1-3 the stand can be shot at, on a 4-6 it cannot. When placing a barrage template, the template need not be centered on a target model. It may be placed in any way to maximize the number of troops targeted. It may not cover an HQ unit unless the HQ unit is a valid target.

**Indirect Barrages:** Artillery may fire at targets they do not directly see but are still within range. Two requirements must be met in order to fire indirectly. First, the artillery detachment must be on First Fire Orders. Artillery units that voluntarily hold fire from First Fire to Advance may not fire indirect barrages. Second, some other unit from the same army (called a "spotter") must be able to see the target point. The spotting model must give up its ability to fire in exchange for calling in an indirect barrage, so units on Charge Orders may not call in barrages. A single model may only call in a one indirect barrage, but each model in a detachment may call in a separate barrage.

Indirect barrages are very imprecise and are likely to deviate from their intended target. After you have placed the template at the desired spot, roll the scatter die and move the template 2D6 cm in that direction. If the scatter die result is the "Hit", the barrage has landed on target and does not deviate.

**Example:** An Imperial Guard tactical detachment is on Advance Orders. After movement is complete, four of the models can see approaching Orks. During the First Fire Segment, three of the models give up their ability to fire and call in one indirect barrage each. The fourth stand may fire during the



## Off-Board Artillery

This represents a battery of long-range weapons that have been deployed some distance behind the combat zone, and includes orbital and naval artillery as well. They are abstract units and players do not need models for them, neither can they be attacked. They do not cost points (as for other units). Instead, the firing player gives up Victory Points when they are used. This represents the fact that the game board only describes a small part of the overall battlefield. If you decide to pull resources to one part of the war, other places will suffer. This has been translated into a Victory Point cost.

A player planning to use Off-Board Artillery must write down, before the battle, the number of Victory Points he is willing to give up for Off-Board barrages. Each Victory Point of barrage requires one Support Card slot, so a maximum of five VPs per Company Card may be chosen. The firing player need only give up Victory Points for barrages actually used – unused Off-Board barrages are ignored. See the various Army Books for details on their types of Off-Board Barrages. Remember to buy a Forward Observer, as they are the only units capable of calling in an Off-Board Barrage.

## Minimum Range

Due to their elevated weapons, many artillery units have a minimum range and cannot fire at nearby targets. If one or more of the models in a battery cannot fire because of minimum range, they are not allowed to pick another target – reduce the Barrage Point total appropriately.

As a secondary effect, if some models in an artillery detachment are engaged in Close Combat, those that are unengaged may fire barrages as normal, reducing the total points of the barrage for models that are not firing.



## Special Ability: Forward Observer

While any unit may call in an indirect barrage, many armies have specially trained and equipped spotters. These troops are capable of relaying precise coordinates and deciding on the appropriate ammunition to use. Any barrage directed by a Forward Observer will scatter 1D6 cm (instead of 2D6). All FO units are HQ units and have the Stealth ability.

FOs are also the only units capable of calling in an Off-Board Barrage. A single FO stand may call in any number of indirect barrages against any number of targets, or a single Off-Board Barrage. FOs may not request fire if they are involved in Close Combat, and may not both call in fire and shoot.

To call in an Off-Board barrage, the FO must make a communications roll of 3+ on a D6. If the roll is successful then the barrage arrives anywhere in the FO's line of sight. Failure indicates the spotter has given the battery the wrong coordinates, or the battery is preoccupied with other things. Multiple Off-Board Barrages do not combine fire – they are resolved separately (including separate scatter rolls), even if they are called in on the same target by different stands belonging to the same Forward Observer Team.

## Special Ability: Static Artillery

Any artillery unit with a movement of 0 is considered to be static. Light artillery with a movement of 0 may be towed following the normal rules (see special ability: Transport), although in this case the Artillery does not sacrifice any movement.

Any effect that would force a static unit to move (e.g Eldritch Storm) will destroy the unit instead. If at any time a static artillery unit fails a morale check the crew abandon the artillery piece. It is effectively destroyed and so is removed from the game.

*As senior ranking officer Jacobus was probably the only one of the Guardsmen who'd fought along side Marines before. He'd heard a lot of legends about these super warriors. Some he found to be obvious ignorant fantasies while others were closer to the truth. Jacobus respected the Marines for their abilities on the Battlefield but the unnatural aura surrounding these men always made him feel uncomfortable and he found it difficult to trust them. However the situation he found himself in made it easy to forget these resentments for the time being.*



# The Effects of Damage

Once a model is hit it is allowed to make an Armour Save to avoid destruction. An Armour Save is successful if a D6 roll is equal to or greater than the model's Armour Save value, modified by the weapon's Target Save Modifier. If the save is failed the model is destroyed and removed from the table. Models that do not possess an Armour Save are destroyed when hit.

## Special Rule: Side and Rear Shots

Armoured vehicles have their heaviest Armour at the front with lighter Armour on the sides and rear. Shots that hit the side or rear Armour of a model gain a bonus to their normal TSM. Shots to the side gain an additional -1 TSM, and rear shots gain an additional -2 TSM. Shots to the side or rear are determined by drawing an "X" between the corners of the model. This rule applies to all vehicle class units and larger that have an armour save.

## Special Ability: All-Around Armour

These units do not suffer from the Side and Rear Shot penalties to their Armour save.

## Special Ability: Fixed Armour Save

Fixed Armour saves work just like regular Armour saves, but they are not modified by a weapon's Target Save Modifier. If a unit has both a regular and a fixed save, the unit only makes one save but may choose the best one.

**Example:** A Terminator has a 4+ Armour Save and a 6+ Fixed Armour Save. It is hit by a bolter (TSM 0) so the player must roll a 4+ to save. If it is hit by a volcano cannon (TSM -4) the regular save becomes 7+ and therefore impossible, so the player must roll the 6+ Fixed Save to survive.

## Special Ability: Psychic Save

Some units have extraordinary resilience to psychic intrusion, due to innate force of will or possession of something that interferes with psychic attacks. This is called a psychic save and will be noted the unit's description. Psychic Saves are only useful against Ethereal psychic attacks – physical Psychic attacks are stopped by a normal Armour save.

## Special Abilities: Medic & Mechanic

Units such as Apothecaries, Techmarines and Bonesingers can heal or repair damaged units and get them right back into the fight. These abilities must be declared and used immediately after the Armour Save (if any) is failed. You can't wait and see who gets hit in order to pick and choose who to save – you have to treat or ignore casualties as they arrive.

Medics grant a save to Infantry and Cavalry-class units. Mechanics grant a save to Walker, Vehicle and Superheavy-class units. Healers may only grant a save to their own armies, e.g. Eldar mechanics may not repair Imperial tanks.

When a healer uses his ability, roll a D6 and on a 5+ the hit is negated. This additional roll is not an Armour Save, instead it's a "save the dying" roll. Healers that administer to things killed in Close Combat can save them. All healers have the following characteristics no matter who they are or what they fix:

**1) Ignore TSM:** The 5+ roll is unmodified by the weapon that did the damage.

**2) Healers are not gods.** They cannot save an infinite number of troops or vehicles from death or destruction. To represent this, saves are limited to 5 attempts per turn. Use a die or counter to keep track, if needed. Only one additional save may be given to any unit, no matter how many healers are around.

**3) "He's Dead, Jim"** Weapons that remove a model from existence (such as Warp Missiles and Vortex Cannons) do not allow a healing save – there's nothing there to patch up.

## Special Ability: Regeneration

These units are able to heal themselves. When a regenerating unit fails an Armour Save, turn the model on its side and treat it as dead. Keep track of how many wounds it has suffered, as the enemy can keep shooting it to make sure it stays down. Shots against a downed creature hit automatically but Armour saves are made normally. During the End Phase roll a D6 for each wound. On 4+ it's healed.

## Special Ability: Penetrating +(X)

These weapons severely damage what they hit, by adding X to any damage roll they cause on a damage table. This does not modify the Armour Save, but rather rolls on the superheavy damage or a hit location tables.



### Special Ability: Multiple Wounds

Some creatures are so tough that they will not die the first time they fail a saving throw. These creatures are represented as having multiple wounds. Place a wound marker next to the model each time it fails its Armour save. When it has accumulated as many wound markers as it has wounds the creature is killed and removed as a casualty. Enemy commanders may continue to pour fire into downed multiple wound creatures and hits are automatic, but Armour saves are made as normal.

Creatures with multiple wounds suffer more damage from Close Combat than from shooting attacks. A creature with multiple wounds will suffer 1 wound for each point it loses a Close Combat. These creatures may be close assaulted when down and as such the creature does not roll any dice for determining results, and only receives its base CAF score.

Some weapons or abilities slay the target outright. In the case of creatures with multiple wounds these weapons inflict as many wounds as the model has. These wounds may be regenerated unless the attack is an ethereal psychic attack. In that case they are irrevocably destroyed as these attacks usually do not leave anything behind to regenerate.

### Bail-Out Roll

Infantry-class units carried by a transport that is destroyed by enemy fire are allowed a "bail out" save. Roll a D6 for each stand in the transport, and on a 4+ it managed to make it out in time. The weapon's TSM applies to this roll, and there must be room around the transport for the infantry to be placed. Units that have natural Armour saves better than 4+ may use them, as can units with fixed saves. Vehicles that are destroyed by a reactor meltdown do not allow a bail out roll.

**Example:** A transport carrying a Terminator and a Tactical Space Marine is hit and destroyed by a Volcano Cannon (-4 TSM). The bail-out save is 8+ (4+ modified by the -4 TSM), and this is impossible so the Marine is destroyed. The Terminator has a fixed save of 6+ and will survive if the player rolls a 6.

### Special Rule: Superheavy Vehicles

Superheavy vehicles are huge, heavily Armoured machines that are very difficult to destroy all at once. When a hit on a superheavy vehicle is scored and the Armour Save fails, roll a D6:

D6 Result	Effect
1	No effect.
2 – 3	The superheavy is damaged, and for the rest of the game has a -1 To-Hit penalty when firing its weapons. A second damaged result on an already damaged superheavy will destroy it.
4 – 6	The superheavy is destroyed and removed from the battlefield.

Damage can be repaired by Mechanics, but a successful roll will only repair a single "level" of damage per turn. E.g. a result of 4-6 (destruction) that is repaired will be reduced to a result of 2-3 (damaged). This damage may be repaired by a second roll on a following turn, but not by a second Mechanic in the same turn.

**Example:** A Plasma Cannon scores 3 hits on a Stormhammer Superheavy Tank. The Armour Save of 1+ is modified by a TSM of -4, and rolls of 5, 2 and 4 indicate that two shots do damage. The Titan player rolls twice on the damage table, getting a 2 and a 3. The first result damages the Stormhammer and the second destroys it. A nearby Adeptus Mechanicus attempts to save it from destruction, and with a roll of 6, succeeds in negating one of the "damaged" results. The Stormhammer has survived but the first "damaged" result still applies.





## Close Combat

Sometimes subduing your opponent with firepower is not enough and you must come to grips with the enemy in vicious hand-to-hand combat. Close Combat not only involves physical combat but also short-ranged fire and grenades

### Resolution

Close Combat is resolved between two models by each player rolling 2D6 and adding the unit's Close Assault Factor. The high score wins and the losing model is removed. Close Combat is extremely deadly, and to reflect this no Armour Saves (fixed, psychic or otherwise) are allowed for models that lose Close Combat. The loser is automatically removed.

In the event where the Close Combat result is a tie both models remain engaged (neither is eliminated) until the next turn where they will again fight another round of Close Combat.

If a model has been immobilized or killed (in the case of Regenerating creatures such as Trolls and Bio-Titans) for any reason and is in Close Combat, it will only be able to use its base CAF (don't roll any dice).

**Example:** An Eldar guardian troop stand (CAF +0) is engaged with one Space Marine stand (CAF +2). The Eldar player rolls a 9 on 2D6. The marine player rolls an 8 on 2D6, and he adds his CAF (+2 in this case) for a total of 10. The Eldar Guardian has a CAF of +0 so his die roll remains at 9. The Eldar stand loses the fight and is removed from play.

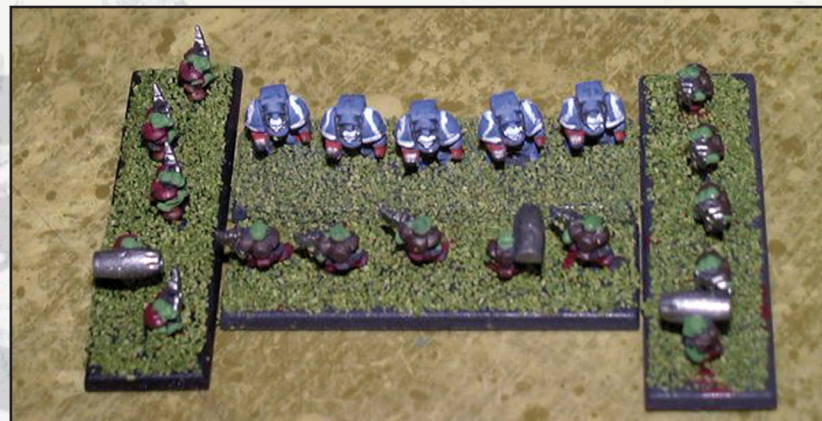
**Example:** A Space Marine Assault stand (CAF +3) engages a Land Raider tank (CAF +3). The Marines roll a 7 modified to a 10, while the tank rolls a 6 modified to a 9. The tank loses, and since its Armour Save of 2+ is of no use in Close Combat it is removed.

### Multiple Opponents

For every extra combat a unit fights beyond the first, the next opponent receives a cumulative D6. Additional attackers continue to receive extra dice as long as the target model survives.

### Special Ability: Combat Leader

All friendly detachments with a model within 10 cm gain +1 CAF.



**Example:** Three Ork infantry stands (CAF +0) engage a single Terminator stand (CAF +6). The first stand attacks and rolls a 7 on two D6, and since he has no CAF bonus the 7 is not modified. The Terminator stand rolls a 5 on 2D6, but it is modified to 11. The first attacker is destroyed.

It's the second stand's turn, and since he is the second attacker he receives an extra die, and rolls a 12 on the 3D6. The Terminator stand rolls a seven on 2D6, but his CAF modifies this to 13 and he destroys the second infantry stand as well. The last infantry stand counts as yet another additional attacker and receives an extra D6 over what the previous infantry stand received.

The last infantry stand gains two dice for being the third attacker, and rolls 4D6 and gets 20! The Terminator stand rolls 2D6 and gets, with his CAF, a combined total of 14, so he is finally destroyed by overwhelming odds!

### Complex Combats

Frequently, large Close Combats involving many models per side will happen, where units touch and engage several enemies each. The simplest way to resolve them is to identify all the models in the combat and pair them off. The player with the most models, after all the opponents stands are engaged at least once, can begin to double up on opponents. Three or more against a single opponent is not allowed until all others have been engaged by at least two, and so on. This is to avoid the unrealistic singling out of a stand. Furthermore, the player who has more models in the Close Combat may decide in which order this Close Combat is resolved (i.e. which models will attack first and which last).





**Example:** A group of two Tactical Space Marine stands and a Medic are engaged by six Ork Boyz. Pairing off models, each Marine and the Medic are engaged by two Orks. The Ork player may decide the order of combats, and wisely chooses to resolve the combat against the Medic first. If the Medic dies he may not use his special ability to save the Marines.



"Battle Brothers! We have them on the run!" Let's clear a landing zone for the Dropships!" the Sergeant yelled. "Colonel, Give me a Status report." Colonel Jacobus didn't like getting ordered around like that but this was a soldier of the Adeptus Astartes so at the moment it would probably be wisest to follow his lead.

"The Main thrust of the Ork advance is at two-o'clock. Mainly infantry with medium armoured support. There appears to be some kind of artillery positioned behind that ridge." As on cue another explosion tore through the trench, razor sharp shrapnel bouncing off the Marine Sergeant's powerarmour.

"Very well. Alpha and Gamma squads deploy in the ruins. Epsilon and Delta move to the right flank and dig in. The rest provide cover fire. Move out!"

Two huge Marine Landing craft dropped out of the low clouds. Incoming Ork fire bouncing off their armoured hulls or deflected by the ship's heat shielding.

"Sergeant! We need to divert fire away from the Dropships or they won't make it!"

Another explosion almost threw Colonel Jacobus off his feet. One of the Landing Craft burst into flames and crashed into the ruined Manufactorum. From behind the ridge the source of the explosion became evident. The ground

shook as a huge beast of steel and iron stepped out of cover. Tall as a building with guns the size of tanks Colonel Jacobus instantly recognised this most malefic creation of the Ork Mekboyz: a Gargant!

"Delta squad report in!" There was a certain traceable desperation in the sergeant's voice Jacobus noticed.

The second Marine Landing craft had dropped of it's cargo of Whirlwinds and a couple of Dreadnoughts. "Move into position. Anti Tank rounds. Stand by to fire on my command. FIRE!"

Rockets and bolter fire poured into the huge armoured belly of the Gargant but to little effect. "Dammit we need heavier weaponry!" the Sergeant yelled. "Try to silence those guns. Concentrate fire on the gargant's weapon systems."

Suddenly the air filled with electrical energy. Jacobus threw himself to the ground just in time to see Sergeant Nicodemus' head engulfed in blue flames from a huge electrical discharge. Screaming the Marine fell to the ground. Jacobus had seen this before. There was a Weirdboy somewhere in the Ork army as well! Things could hardly get much worse...

Jacobus picked up the dead sergeant's Comm link. "This is Colonel Jacobus. Call in an Orbital Bombardment on coordinates Z10/45a. Encountering heavy resistance. Gargants!"



# THE END PHASE



## The End Phase

This is when the players take a breather and look at what just happened. Things determined in this phase include repair, regeneration, morale and rally rolls. This is also when Victory Points are counted up and a possible winner determined.

### Special Abilities

Any ability that hasn't been used yet should probably be used now. This includes Regeneration, repair rolls, attempts to raise Void Shields and the like. If you've forgotten to use an ability to prevent damage, such as Medic or Technician, it's too late – once models are taken off the board, they're out of the game.

Certain armies, namely Chaos and Tyranids, receive cards indicating special abilities they can use. When these cards can be used and what effect they have is detailed in the appropriate Army Book. Instantaneous cards (such as most Chaos Cards) are played whenever the player wants and the effect is resolved immediately. Cards that act as an attack (such as the Tyranid Psychic Barrage) are used in the Combat phase and count as the player's activation just as if a detachment had been activated.

### Rally Check

Any units that have spent the entire turn on Fall Back Orders during the turn may make a rally check. If the roll is made the Fall Back Orders counter is removed and the unit may be given orders as normal next turn. If it's failed the unit will continue to run away. A unit may not make a rally check to get rid of Fall Back Orders gained this turn – it must make at least one full move away before trying to turn around.

### Break Points & Break Tests

Count up how many models have been killed from each Army Card. If this number is equal or greater than the Break Point, the unit has been broken. Your opponent is awarded Victory Points and the unit must make a Break Test or immediately be given Fall Back Orders. This is also called a morale check.

When an Army Card consisting of multiple detachment reaches the Break Point (such as most Company Cards), each detachment must make a morale check (regardless of whether that individual detachment is still intact!). In the case of Support and Special Cards, only the detachment it represents needs to make the morale check.



#### **Optional Rule: Broken Units in Close Combat**

Under the original Space Marine rules, broken troops are less effective in Close Combat as they know they've taken a beating and are ready to run away. At the start of the Close Combat Segment, any broken unit that is engaged in Close Combat must make a morale check. If it passes it may fight normally, but if it fails it goes on Fall Back Orders and suffers the associated -2 CAF penalty. If the unit is already on Fall Back Orders it will immediately rout and be destroyed, inflicting no casualties in combat.

#### **Victory Points**

Count up how many VP's each player has. If one or both players reach the preset VP total the game ends and either a victory or tie is declared. VP's gained from breaking enemy units accumulate from turn to turn, but those from objectives must be calculated every turn. An objective will count toward a player's total only if he has the only effective unit within 15 cm of the objective. Units engaged in Close Combat or on Fall Back Orders may not claim objectives.

## **Morale**

This represents how well trained and disciplined the unit is. Troops can only take so much before their discipline breaks and they decide to flee the battlefield. A unit's Break Point and Morale values determine how long a unit will continue to fight.

#### **Special Ability: Inspirational**

All friendly detachments with a model within 10 cm get +1 to all morale tests.

#### **Morale Test**

A morale test is made anytime a unit suffers a strenuous shock to its fighting effectiveness, such as heavy casualties or a charging Greater Daemon. It may occur several times during the turn if the circumstances are right. Whatever the source the resolution is the same. Roll a D6 and if the roll is equal to or higher than the unit's Morale value the check is passed. If not the unit immediately receives Fall Back Orders and acts accordingly.

#### **Special Ability: Fearless**

Some units have no morale values, such as robots and drug-crazed fanatics. These units never make morale checks nor are they affected by powers that involve morale, such as Fear, Terror or Greater Daemons. Having no morale value is different than a 1+ morale value or automatically passing morale checks – this is important for certain psychic and Chaos powers.

#### **Special Ability: Fear**

On the first turn of Close Combat, your opponent must pass a morale check or suffer a -2 CAF penalty. This effect applies if you charged or were charged, and only applies to the first turn of Close Combat. Subsequent rounds of combat against the same detachment are resolved as normal. This ability only has an effect if you are able to pin your opponent.

#### **Special Ability: Terror**

These are fearsome opponents and literally paralyze their opponent with fear. Any opponent who wants to engage you in Close Combat must pass a morale check to enter into base-to-base contact. A failed morale check means the enemy stops 1 cm away and can't move any farther. A passed check means the enemy may move in and fight you in Close Combat as normal.

Enemy units that you charge and engage in Close Combat must make a morale check or immediately go on Fall Back Orders (the associated -2 CAF penalty applies to this combat). Additionally, if you charge someone on First Fire Orders, they don't get to fire at you. If you charge a unit that is already on Fall Back Orders it must make two morale checks – one for Terror and one because it's a Fall Back unit in Close Combat. If either one is failed then the unit routs. This ability only has an effect if you are able to pin your opponent.

#### **Special Ability: Daemon Hunter**

These units have been specially trained and equipped to face the powers of Chaos. The unit is immune to any morale effects caused by Chaos or warp creatures, including Chaos Rewards, Greater Daemons and always failing morale tests on a "1." Daemon Hunters are also exceptionally deadly in Close Combat and negate all "after death" effects: Greater Daemons can't use Chaos Rewards to save themselves, Trolls can't regenerate, Pink Horrors don't split into Pink Horrors, and so on. This ability does extend to non-Chaos beings, such as regenerating Tyranids – after a Daemon Hunter kills you he cleanses the area with flaming holy oil and purifying plasma.

#### **Routing**

A unit that is on Fall Back Orders that fails a second morale check, for whatever reason, will rout. A routed unit is destroyed and all units are immediately removed from the battle with no save or regeneration. They count towards the Army Card's Break Point and VP's awarded to your opponent. In campaign games these units will return after the battle, but they are no longer a cohesive force for this fight.



# Psychic Powers & Special Abilities

Certain units display powers far beyond those of mortal men. These special abilities are summarized in Appendix A, and should be pretty much self-explanatory. Most of them are detailed in the appropriate sections of the rules, and the others are listed below. When they can be used and their effect is determined by the power and the unit's orders. Some may be used when the detachment is activated in the Combat Phase (like psychic attacks), others may be activated at any time (like Medic) while passive ones are always working (like Stealth). Most abilities cannot be activated by a unit on Charge Orders or while inside a transport. Use some common sense to figure out when an ability can be used or not.

## Special Ability: Psyker

These units have special abilities such as magic, mutant powers and techno-wizardry as well as psychic and hive mind powers. Details on the abilities are in the unit's description – most psykers have three powers and may use any one of them each turn. Powers are broadly grouped into Physical or Ethereal psychic powers. A Psyker may use both a psychic power and a conventional weapon in the Combat Phase.

**Physical:** Physical powers represent tangible forces that cause physical damage. These powers function as normal firing weapons and possess To-Hit values, TSM modifiers and require line of sight. Physical psychic powers that hit active shields will knock one down as they represent a physical force like normal shots. Since this power is basically physical in nature, Psychic Saves do not protect against them but regular Armour saves will.

**Ethereal:** Ethereal psychic powers do not create a physical force to deal damage. These powers bypass normal defenses and directly attack the target's mind or spirit. These powers can only be avoided by a Psychic Save.

## Special Ability: Elite

These are the best fighters in your army. In Close Combat, Elite units are assigned against enemy troops last and may engage in selective pinning. This means a unit of Elite troops does not have to engage all models in a unit before it can gang up on one or more models. In essence they may pick and choose which stands they may engage while ignoring others.

In addition, each Elite detachment in your army gives you a re-roll counter. This counter may be used once per game on any die roll that any Elite unit makes

## Special Ability: Combat Engineer

In the war-torn battlefields of the universe it is a valuable ability to create obstacles to slow down the enemy advance while facilitating the advance of friendly units. Combat Engineers have been specially trained to perform these tasks, and scenarios may have other things for them to do. Examples are minefields that can bar passage and demolition charges that destroy critical fortifications.

Engineers may perform one Engineering Mission per turn, indicated by giving the detachment First Fire Orders and specifying what the unit is doing. The mission takes the entire turn and fails if the Engineers move, shoot, engage in Close Combat or are closer than 6 cm to an enemy model in the End Phase.

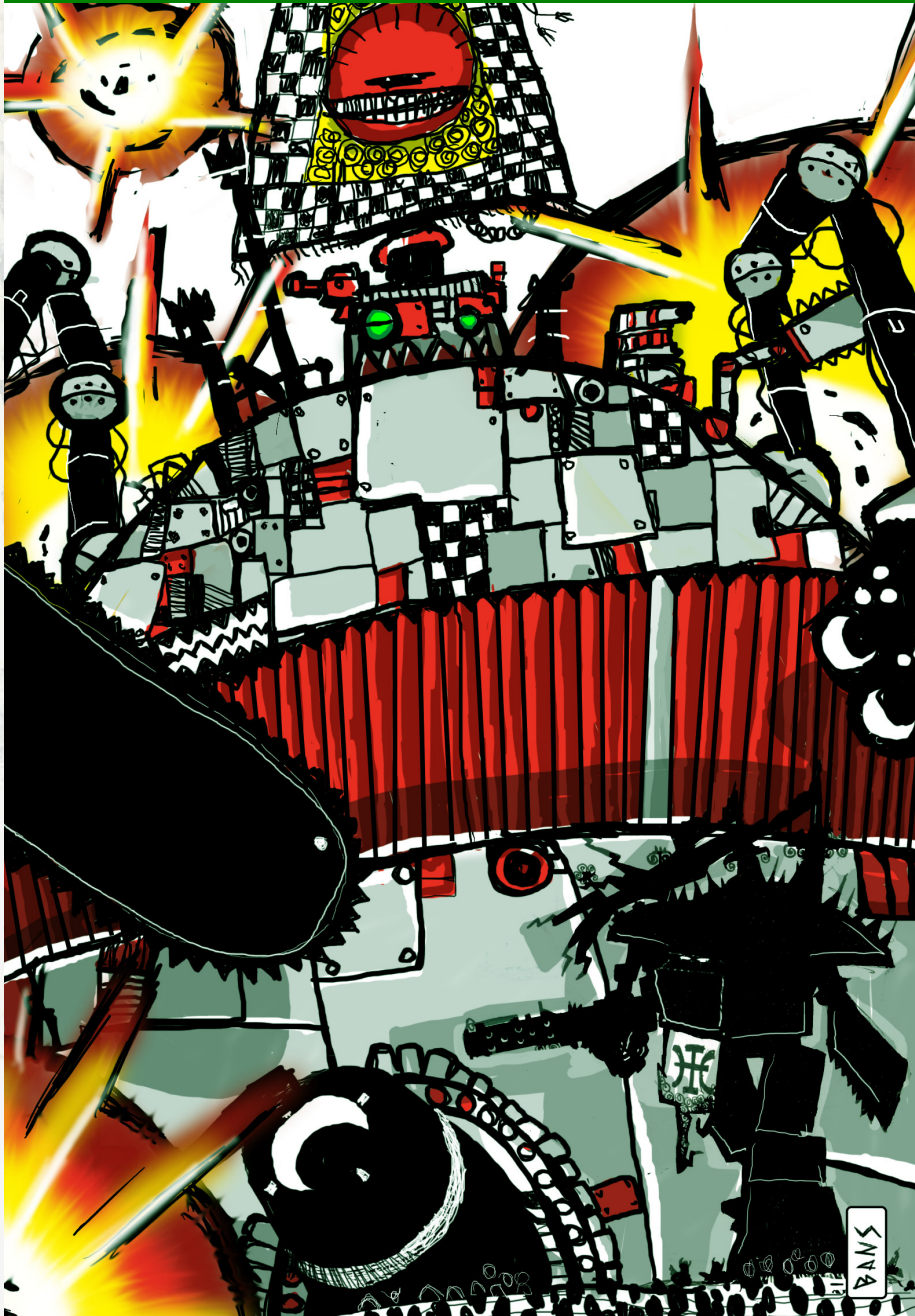
### Engineering Missions:

- 1) **Lay Minefield:** Place a 5x10 cm minefield model on the table, touching any 3 Engineer stands.
- 2) **Clear Obstacle:** 3 Engineers must be adjacent to it, and they will remove one piece (about 5x10 cm in size) at the end of the turn. Roll a D6 if they're clearing a minefield, and on a 5+ one stand takes a hit at 0 TSM.
- 3) **Set Demolition Charge:** Two Engineers may place demolition charge on a building, fortification, bridge, road segment or other structure. Use a marker or small bomb model to represent this. This charge may be detonated in the End Phase of this or any later turn. When it is detonated center a 3 cm (small Gutbuster) barrage template on it. Any model even partially under the barrage template is automatically hit at -6 TSM, and the structure must make an Armour save at -6 TSM or be destroyed.
- 4) **Defuse Demolition Charge:** Any Engineer stand may attempt to defuse a demolition charge if it is in base to-base contact. Roll a D6 for each attempting stand and on 4+ the charge is defused, but if any dice show a one it goes off. Otherwise your opponent may choose to set it off or wait.





# TITANS & PRAETORIANS



## Titans & Praetorians

Titans are walking behemoths of death and destruction. The smallest are a dozen meters tall while the largest dwarf buildings. Praetorians are gigantic Armoured vehicles of death and destruction, and although ponderously slow they are no less deadly.

**Imperial Titans:** Built by the Adeptus Titanicus, these vast machines are maintained and used by the Orders of the Divisio Militaris. Hundreds of feet tall, wrapped in protective Void Shields, sheathed in meters of Armour and carrying the largest weapons available, titans are the most powerful force in the Imperium. Chaos armies sometimes field corrupted and mutated versions of these as well as the dreaded Banelord.

**Eldar Titans:** Eldar armies, as many of their opponents, use these giant walking war machines. Eldar Titans are very agile and can make as many turns as they like when they move. They carry both technological and devastating psychic weaponry and are protected by special Holo-fields.

**Ork Gargants:** Gargants are the titans of the Ork armies. They are large fat machines walking on short legs. Gargants are powered by low-technology boilers and lack the agility of Imperial and Eldar Titans. Nevertheless, with their powerful arsenal of weapons and their structural resiliency, they are matching opponents to most of those.

**Tyranid Bio-Titans:** These monstrous creatures tower over the battlefield, terrorizing enemy troops with needle showers, acid sprays and other biological horrors. Bio-titans do not have shields, but regenerate over time.

## Purchasing Titans & Praetorians

Praetorians and some titans carry a fixed array of weapons and are purchased as any other Army Card, i.e. as a Special or Support Card for your army. Most titans, however, may be fitted with a variety of weapons according to the mission and the player's preferences. The various hulls, weapon descriptions and point costs can be found in the appropriate Army Books, but the procedure for outfitting a titan and purchasing weapons is the same in all cases.

- 1) **Purchase the hull.** These are listed in the Army Card lists and purchased normally.
- 2) **Select weapons.** The descriptions and costs are listed in the Army Books.
- 3) **Count the cost.** Add the cost of the hull and weapons together, and round up to the nearest 50 points.



**4) Calculate Victory Points.** Titans are worth one VP per 100 points they cost, rounded up.

**Example:** An Imperial Warlord titan is armed with a Volcano Cannon, Vortex Missile, Gatling Blaster and a Chain Fist. The cost is 500 (hull) + 100 (Volcano Cannon) + 150 (Vortex Missile) + 60 (Gatling Blaster) + 25 (Chain Fist) = 835, rounded to the nearest 50 becomes 850. This Warlord costs 850 points to field and is worth 9 Victory Points to the enemy if destroyed.

#### Optional Rule: Titan Battle Groups

Titan Battle Groups (also called Bio-titan Broods or Big Mobz) are a Company Card consisting of 3 titan hulls. When forming a Battle Group round up the purchase values for each individual Titan then add those for the total Battle Group cost. Titans in a Battle Group have a 25 cm unit coherency.

Big Mobz are battle groups where you can have both Great Gargants and Slasha Gargants. The largest becomes the Boss Gargant and automatically receives a full compliment of power fields. All Gargants in the Big Mobz must be within 25 cm from the Boss Gargant to receive orders. If the Boss Gargant is destroyed the player may designate another one in the End Phase.

**Example:** A Warlord Battle Group consisting of three of the above-mentioned Warlords costs 2550 points and each titan is worth 9 VPs.



## Shields

Titans and Praetorians possess more than mere Armour, and are protected by various types of shields. Imperial titans, praetorians and their Chaos counterparts use Void Shields. Ork Gargants use Power Fields that are slightly less reliable, while Eldar Titans use a protective system known as a Holo-field.

**Void Shields:** These absorb all incoming hits until knocked down. Weapons must have a TSM of at least -1 in order to knock down shields. Downed shields may be repaired on a 4+ in the End Phase, rolling once for each shield. Void Shields provide a 4+ Psychic Save.

**Power Fields:** These Ork-built shields may flicker out of existence when needed. Roll a D6 for each shot that hits, and on a 6 the Gargant is hit instead of the shield. Check to see if the shield flickers before ignoring shots without at least a -1 TSM. Power Fields may not be repaired during battle, and provide a 4+ Psychic Save.

**Holo-fields:** These shields disrupt targeting systems and distort the image of the titan. The effectiveness of the shield depends on the speed the titan is moving. The shields provide a Fixed Save according to the table below. This save does not apply to weapons that use any kind of template, but any barrage template that is placed to cover the titan will always scatter regardless of whether the barrage is direct or not. Holo-fields provide a 4+ Psychic Save against powers that require a line of sight.

Titan is on...	Fixed Save
First Fire Orders	4+
Advance Orders	3+
Charge Orders	2+





# Hit Location Templates

Titans and praetorians can withstand more damage than lowly troops and vehicles. To represent this they possess location templates. These locations, and their saves, vary according to whether the shot hits the front, side or back of the unit. Due to their size titans and praetorians may be targeted regardless of whether the whole model can be seen. After you roll and hit a model with a hit location template, follow the steps below:

**1) Scatter the shot.** Pick a location and roll the scatter dice. A shot that deviates to a blank or already destroyed location, or a location covered by an obstacle is considered a miss.

**2) Make an Armour Save.** Modify the location's Armour Save by the weapon's TSM as normal. If the save fails the shot has penetrated the Armour. If a location has been destroyed or blown off, the shot will hit the hull (if that wouldn't make sense, choose another logical location) with an additional -1 TSM.

**3) Consult the Damage Table.** For each failed save roll once on the appropriate damage table and apply the damage described. Weapons that have the special ability Penetrating add their bonus to this roll. If a location is hit more than once, roll for damage normally but the second and following hits add a cumulative +1 to the roll. Any result above 6 should be treated as a 6. The damage bonus is permanent and relates to the exact hit-location that has been hit.

*The situation was growing more desperate by the second. "Where the heck is that Orbital?" he yelled. "Sorry sir. The "Furious" won't be in position for another hour. They're encountering some heavy resistance up there as well." The air was torn by a deafening roar of twisted metal. Jacobus could see what appeared to be a huge mechanical jaw mounted in the Gargant's belly opening.*  
*"What the..." A hiss of steam interrupted Jacobus as the jaw took a huge bite out of the Manufactorium. Half of the building came crashing down leaving the few remaining Guardsmen dangerously exposed.*  
*Yet another huge explosion tore through the position this time reducing the remaining part of the Manufactorium to dust.*  
*"Where on earth is that shelling coming from?" Jacobus looked around.*  
*"Don't know sir..." the captain answered.*  
*Another explosion. The earth was shaking. Was the Gargant moving again?*  
*Another Gargant perhaps?*

## Damage Results

**Reactor Damaged:** The titan is immobilized, may not fire weapons and all shields go down. Do not roll to repair anything other than the reactor in the End Phase.

**Reactor Crippled:** As above, but if the reactor is not repaired this turn, it will explode (as below).

**Reactor Explodes:** The titan is destroyed, and all units within 3D6 cm are hit at 0 TSM.

**Titan Falls:** The titan is destroyed. Roll a scatter die for direction and determine which units are underneath. Knight-class and larger models take a hit at -3 TSM, and smaller units are destroyed with no save.

**Weapon Blown Off:** The weapon will scatter 2D6 cm and hit units underneath at 0 TSM.

**Example:** A Warlord Titan fails two Armour Saves to the reactor. The first damage roll is a two, meaning the reactor is off line and must be repaired. The second roll is also a 2, modified to a 3 because it is the second hit to that location. This damage result indicates that if the reactor is not repaired this turn it will explode.

**Example:** The two hits on the Warlord above were caused by a lascannon and a volcano cannon. The volcano cannon has the special ability Penetrating +3, so the second roll on the damage table would be modified to a 6 (roll of 2, +1 because it's the second hit to that location and +3 from Penetrating). This damage result indicates that the reactor explodes now!

## Repair Rolls

In the End Phase, players may roll a D6 for each damaged (but not crippled or destroyed) location and all downed Void Shields. On a 4+ it's fixed. Locations described as crippled or destroyed cannot be repaired.

If a titan's reactor, generator or main power supply has been damaged, only roll to repair the reactor. Other locations cannot be repaired until the titan has power again. If by some circumstance the reactor is damaged and the titan still has shields, the shields are non-functional until the reactor is back again online.



### Special Rules: Titans

**Orders:** Titans use and follow the normal order rules as other ground units.

**Movement:** Titans are ponderous machines and are extremely un-maneuverable. To reflect this, titans can only turn a total of 90 degrees during their movement, though this may be divided between any number of turns. Titans can move backwards at half speed.

**Firing:** Titans fire normally as per their given orders. Their multiple weapons can bring fire upon various targets as line of sight and range permits. Titan weapons that count as Anti-Aircraft may Snap Fire even if the titan is on Advance Orders. If a titan's AA weapons do Snap Fire, it does not prevent the titan from later moving and firing the rest of its weapons normally – the weapons are considered independent from each other.

Imperial, Eldar and Chaos Titans possess a 180° arc to the front of the model. Ork Gargants possess a 180° arc from front to back of the model, covering the right or left side. This means that Gargants can fire at models behind them, but weapons on the left side of the titan can not fire at models to its right and vice versa. Some weapons have special fire arcs and these will be detailed in their corresponding descriptions.

**Close Combat:** Titans are fearsome opponents and possess several special rules regarding Close Combat. First and foremost is the combination of their size and mobility, resulting in their inability to be outnumbered by anything smaller than a Knight-class opponent. That is, small units do not generate additional Close Combat dice for having multiple opponents.

Titans vs. Titans, Praetorians, Superheavies & Knights: Close Combat is resolved as normal, with each player rolling 2D6 + CAF and the highest total wins. If the losing model has a hit template, the winning player chooses a location on the template and rolls on the damage table. There is no scatter or Armour Save – the location just takes damage. Superheavies and Knights that lose a round of Close Combat are destroyed without any rolls on their damage tables (if any). See the related sections in the Titan Legions and Ork Army Books for the special rules about Imperial Titans and Mega-Gargants.

Titans vs. Everything Else: The first level of defense is the titan's anti-personnel weapon. Be it an electrified hull, reactive Armour, anti-personnel weapons or a horde of crazed Snotlings, the effect is the same. Roll a D6 for each stand or model engaging the titan. On a 3+ the unit takes a hit with zero TSM.

Surviving models may then fight a round of Close Combat with the titan. These fights are all resolved as individual combats, with no additional dice gained for multiple attackers. Yes, taking infantry up against a titan is an effort in futility.

Elite Units vs. Titans: These well-trained and experienced units have a higher chance of surviving a Close Combat encounter with a titan. An Elite model is hit by titan's anti-personnel weapons on a roll of 4+ instead of the standard 3+.

### Special Ability: Agile

A titan with this ability may make as many turns as desired during movement.

### Special Rules: Praetorians

**Orders:** Praetorians usually carry a large compliment of recon and intelligence apparatus which make them able to react promptly to battlefield conditions. To reflect this all praetorian vehicles are considered Command vehicles for purposes of movement and firing. Despite their fulfilling the headquarters role on the battlefield, they never receive the Headquarters special ability and targeting protection – they're too big to fade into the background.

**Movement:** Praetorians are slow and their movement rate is not doubled for Charge Orders. They can only turn a total of 90 degrees during their movement, though this may be divided between any number of turns. Praetorians can move backwards at half speed.

**Firing:** Superior fire control systems permit praetorians to always fire in the First Fire Segment. The weapon firing arcs are detailed in the units' descriptions.

**Shields:** Many praetorians possess some type of shield. Individual unit descriptions will specify the number and type of shields. Templates for praetorians may be found in the relevant Army Books.

**Close Combat:** Despite their size, praetorians are vulnerable to lesser units due to their slow speed. Close Combat with praetorians is resolved as normal.

*Another building reduced to rubble. As the dust cleared Jacobus could make out a roughly humanoid silhouette moving through the rubble. A Titan! A huge loudspeaker playing an Imperial Hymn gave away the construct's allegiance. The music was interrupted by a human voice: "This is Princeps Derlan Ramos of the Saevus Secutor. Stand by." The air filled with the hiss of huge pistons as the gigantic weapons of the battle titan swung towards the gargant.*

*The noise was spectacular but to Colonel Jacobus it was the sweetest music he'd ever heard. He watched the fireworks as powerfield after powerfield flickered and died out on the Gargant until the enormous shells were eating into the armour of the Gargant itself. Jacobus could see the Gargant literally crumble before his very eyes until roaring fires were engulfing the entire warengine. The speakers roared out again: "Situation stabilized..." Jacobus drew a long breath of relief...*



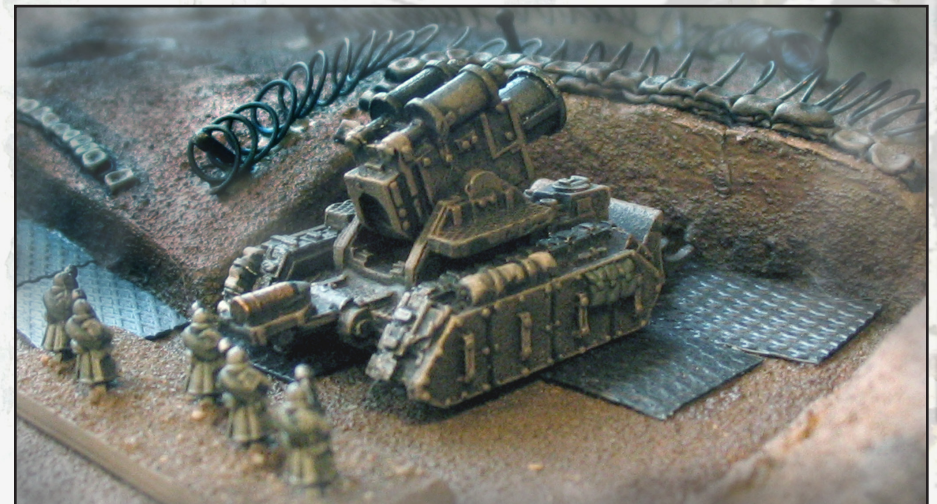
## Appendix A: Normal Abilities

All units have characteristics such as movement rate, Armour and weapons. The default is a human, e.g. an organic biped with the intelligence, reflexes, natural resistances and senses (sight, hearing, etc.) of an Earth-normal human. There are special abilities that affect all characteristics, but all units (infantry at least) start at human levels.

Characteristic	Examples
<b>Movement:</b> How far the unit can move. <b>Related Special Abilities:</b> Deep Strike, Flier, Floater, Independent, Infiltration, Jump Pack, Skimmer, Teleport, Tunneler	10 cm: infantry 20 cm: medium tanks 25 cm: cavalry 75 cm: Flyers
<b>Armour Save:</b> A unit must roll this number or more on a D6 to survive after being hit. This roll is modified by the weapon's Target Save Modifier (TSM). <b>Related Special Abilities:</b> Fixed Armour Save, Psychic Save	None: flak vest 5+: power Armour 4+: light tanks, APCs 3+: medium tanks
<b>Close Assault Factor (CAF):</b> This represents how good the unit is in Close Combat, including melee weapons and grenades. For vehicles it also represents anti-personnel systems, reactive Armour and short-range weaponry. <b>Related Special Abilities:</b> Combat Leader, Fortifications, Morale	-1: untrained militia +0: army basic training +2: Space Marines +4: Ork Nobz +6: Marine Terminators
<b>Morale:</b> This represents how well trained and disciplined the unit is, and how likely it is to remain on the battlefield after taking significant casualties. Roll this number or more on a D6 to pass a Morale Test. <b>Related Special Abilities:</b> Fear, Fearless, Inspirational, Terror	4+: Orks & PDF militia 3+: Imperial Guard 2+: Space Marines 1+: Veteran Marines None: Robots
<b>Pinning Class:</b> A measure of how large and maneuverable a model is, and whether it can move away from unwanted melee combat or not. See the Movement and Close Combat sections for details. <b>Related Special Abilities:</b> Flier, Floater, Hit & Run, Skimmer	1) infantry & light artillery 2) cavalry & walkers 3) vehicles & heavy artillery 4) superheavies & knights 5) titans & praetorians
<b>Hit Points:</b> One. That's it – most units are either on the board and fully functional, or removed from play when hit. Superheavy and larger units have special rules and may take multiple hits to destroy, but anything smaller is destroyed by a single shot. <b>Related Special Abilities:</b> Mechanic, Medic, Multiple Wounds, Regeneration	

Ranged weapons also have a few standard characteristics:

Characteristic
<b>Attack Dice:</b> The number of D6's rolled when attacking with a ranged weapon. Compare to the weapon's To-Hit Roll to see if you hit or not. <b>Related Topics:</b> Barrage weapons, Template weapons
<b>Range:</b> How far the weapon reaches. There is no effect due to movement or range. <b>Related Topics:</b> Line of Sight, Indirect Barrage
<b>To-Hit Roll:</b> How good the model is at shooting its weapons. Roll this number or more on each Attack Die to lay the smack down on your target. There are no penalties for moving or range. <b>Related Topics:</b> Cover, Fortifications, Combining Barrages
<b>Target Save Modifier (TSM):</b> How well a weapon punches through Armour. This number is applied as a penalty to any Armour Save that the target makes, i.e. making it harder to survive. Negative is good, zero is standard. <b>Related Topics:</b> Fixed Armour Save, Penetrating





What may not be immediately obvious is how the various units are divided up. Certain characteristics of a unit, such as pinning and terrain effects, will depend on what class it falls into.

Unit Class	Description	Models
<b>Infantry</b>	From a man with a gun to power Armour to slithering creepies, the core of most armies is the infantryman.	Bases are 20 mm square (old GW bases) or 12 x 40 mm (new GW), holding 3-5 infantry or 2-3 cavalry models.
<b>Cavalry</b>	These are fast-moving, have little to no Armour, and short-ranged weaponry.	
<b>Walker</b>	Armoured battlesuits larger than power Armour but smaller and slower than tanks.	These are represented by a single model that is 15-30 mm tall, using a 20 or 25 mm base.
<b>Knight</b>	The walkers' big and more heavily-armed brother, a.k.a. the battlemech.	
<b>Vehicles</b>	These range from dune buggies to massive tanks.	These are also represented by a single model, and bases are optional. Vehicles and artillery pieces range from 20-40 mm long with Flyers being only slightly larger.
<b>Light Artillery</b>	These are medium-range guns with no Armour and a small crew (such as a mortar team).	
<b>Heavy Artillery</b>	These are long-range guns mounted on a vehicle.	
<b>Flier</b>	While some units can move above the ground, only Flyers can reach high altitudes.	
<b>Super-heavy</b>	The largest tanks on the battlefield that don't have special rules.	Single models between 40-60 mm long and 20-30 mm wide, with no base.
<b>Praetorian</b>	These are bigger and do have special rules.	
<b>Titan</b>	Walking behemoths of death and destruction. They generally swat lesser units aside like bugs – the only real defense against a titan is another titan.	These are 40-60 mm tall and use a 50 mm round base.

There are also a few special abilities that modify what the unit is, as opposed to what it can do:

## Biology

<b>Organic</b>	This is the default for all units, the alternatives being Inorganic and Daemonic.
<b>Inorganic</b>	The unit is a technological, crystalline or energy-based being and does not have an organic biology. Powers and effects based on poison, disease, pheromones and smells are ineffective, though mental, emotional and soul/life-force based powers still work. Inorganic does not give any immunity to fear or morale effects – see Artificial Intelligence and Robot, below.
<b>Daemonic</b>	Also known as extra-dimensional, the unit is not native to this state of existence. The energy matrix that binds the being to this dimension strengthens the host body, but is also vulnerable to disruption, e.g. exorcism or banishment. The accompanying aura of evil and 'wrongness' causes any morale check caused by Daemonic units to be failed on a "1." This only applies to units that actually possess a morale score, and not to Fearless or other units that are immune to morale (like robots). Daemonic being are not naturally immune to this effect from other Daemonic beings.
<b>Angelic</b>	The "good guy" counterpart to Daemonic. This is only included for the editor's sense of completeness, as there are no angels in the grim, war-torn future of the 41st century.

## Intelligence

<b>Stupid</b>	Certain units are not noted for their intelligence and must receive direction from someone else. If there is no one to give them orders, roll a D6: 1-2 the unit has Advance Orders, 3+ Charge Orders.
<b>Instinct</b>	The being possesses only rudimentary self-awareness. Without external guidance it will revert to instinctual behavior beyond the player's control. Examples: Ork Boyz, Tyranids.
<b>Artificial Intelligence</b>	The unit is a construct, designed without emotional responses. Powers and effects based on fear or emotions are ineffective, and the unit is immune to morale. While it is common to be both AI and Inorganic, it is not required (e.g. undead). Examples: OGRE tanks, mindless zombie slaves, Necrons.
<b>Robot</b>	The unit is a non-sentient robot or other technological construct, designed without a self-preservation instinct or the ability to act independently. Powers based on fear, life-force, souls or emotions are ineffective, and the unit is immune to morale. Robots must usually be programmed before a battle, and are almost always Inorganic.



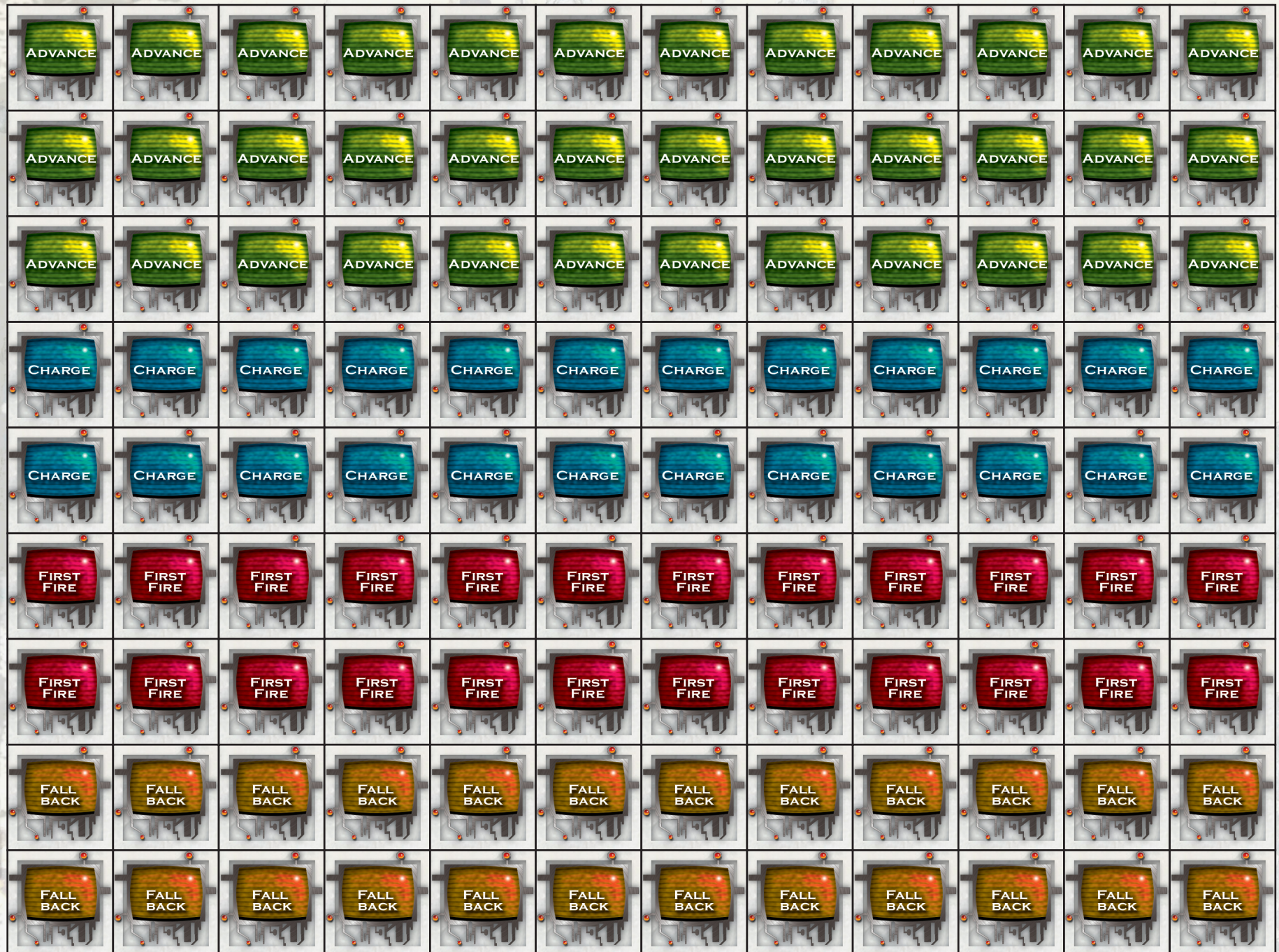
## Appendix B: Special Abilities

Agile	The titan may make as many turns while moving as desired.
All-Around Armour	The unit does not suffer an Armour save penalty from side or rear shots.
Anti-Aircraft (AA)	The unit or weapons is dedicated to AA use. See Flyers for details.
Artificial Intelligence	The unit is immune to morale and powers based on fear or emotions.
Combat Leader	All friendly detachments with a model within 10 cm get +1 CAF.
Combat Engineer	The unit may perform Engineering Missions. See The End Phase for details.
Command	The unit may always move double normal and fire in the First Fire Segment.
Daemonic	Any morale check cause by the unit will fail on a roll of "1."
Daemon Hunter	The unit is immune to Chaos morale effects, and negates all "after death" effects.
Damages Buildings	The weapon will inflict an SI point of damage on a failed Armour
Destroys Buildings	The weapon will destroy a building on a single failed Armour save.
Deep Strike	The unit flies onto the battlefield. See Modes of Movement for details.
Elite	The unit is better in Close Combat and grants a re-roll. See The End Phase for details.
Fear	On the first round of CC, your opponent must pass a morale check or suffer -2 CAF.
Fearless	The unit has no morale value and will never need to make a morale check.
Fire on the Fly	The unit may move, Snap Fire and continue movement if on Advance Orders.
Fixed Armour Save	A unit's fixed Armour save is not modified by the weapon's TSM.
Flier	The unit moves through the air. See Modes of Movement for details.
Forward Observer (FO)	The unit is skilled at calling in artillery. See Artillery for details.
Hard to Hit	All non-template ranged fire at the unit suffers a -1 To-Hit penalty.
Headquarters (HQ)	The unit may not be shot unless it is the closest target or >10 cm from things it's size.
Hit & Run	If the unit Charges, it is not pinned in the second round of CC.
Ignores Cover	The weapon ignores cover modifiers To-Hit, such as from woods or fortifications.
Independent	The unit ignores command distances, but routs instead of Fall Back while outside.
Infiltration	After setup, Infantry & Walkers may move on Charge, others move normal distance.
Inorganic	The unit is immune to powers based on poison, disease, pheromones and smells.

Inspirational	All friendly detachments with a model within 10 cm get +1 to morale checks.
Instinct	If the unit is too far from a command unit, it will revert to instinctual behavior.
Jump Packs	The unit leaps over the ground. See Modes of Movement for details.
Medic	Infantry and Cavalry-class units within 10 cm get a 5+ Fixed Save.
Mechanic	Vehicle, Superheavy and Walker-class units within 10 cm get a 5+ Fixed Save.
Multiple Wounds	The unit takes more than one hit to kill, but suffers 1 per point it loses in CC.
Open-Top Vehicle (OTV)	Transported models may fire. Hits on the vehicle also hit things inside.
Penetrating +(X)	The weapon adds X to rolls on a superheavy or hit location template damage table.
Point Defense (X)	The unit carries anti-infantry weaponry. See The Movement Phase for details.
Psychic Save	The unit has a save against Ethereal psychic attacks.
Psyker	The unit has special abilities (magic, mutant powers, etc) and may use one per turn.
Quickdraw	The unit does not suffer the -1 To-Hit penalty when Snap Firing.
Regeneration	During the End Phase roll a D6 for each wound the unit has taken. On 4+ it's healed.
Robot	The unit is immune to morale and powers based on fear, life-force, souls or emotions. Robots must be programmed before a battle, and are almost always Inorganic.
Skimmer	The unit moved just above the ground. See Modes of Movement for details.
Sniper	The unit may recognize and target HQ models on a 4+.
Static Artillery	A heavy artillery unit that may not move, and routs on any failed Morale test.
Stealth	If the unit is in cover, it may not be seen from over 25 cm away.
Stupid	Unless someone gives the unit orders, roll a D6: 1-2 Advance Orders, 4+ Charge.
Teleport	The unit teleports onto the battlefield. See Modes of Movement for details.
Terror	Enemies must test morale to enter base-to-base with you. The target of your charge must test morale or go on Fall Back Orders. See Morale for details.
Transport (X)	The unit may carry up to X number of infantry stands, and tow one light artillery.
Tunneler	The unit moves underground. See Modes of Movement for details.



## Appendix C: Example Orders Counters

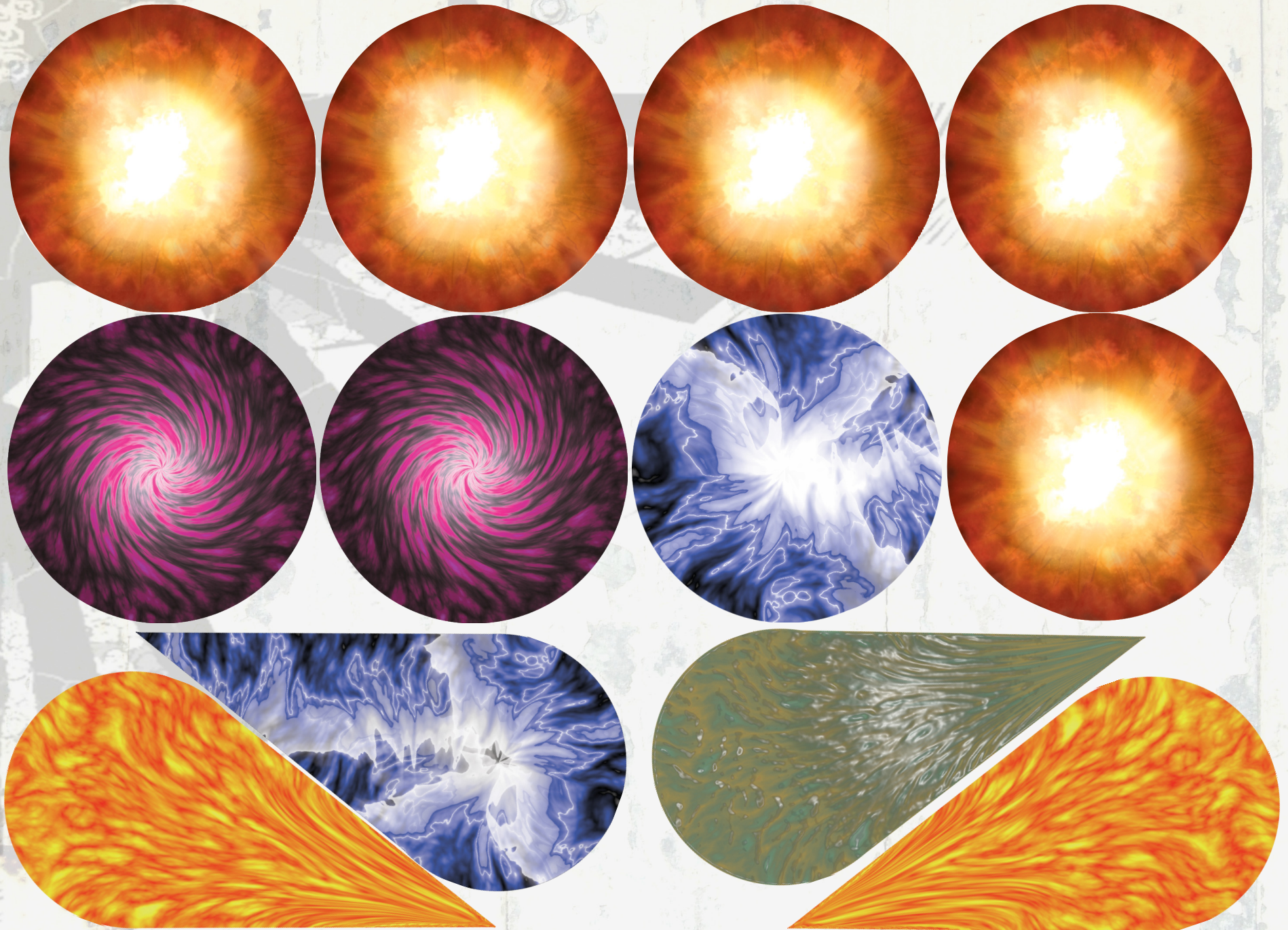








## Appendix D: Example Blast Templates etc.





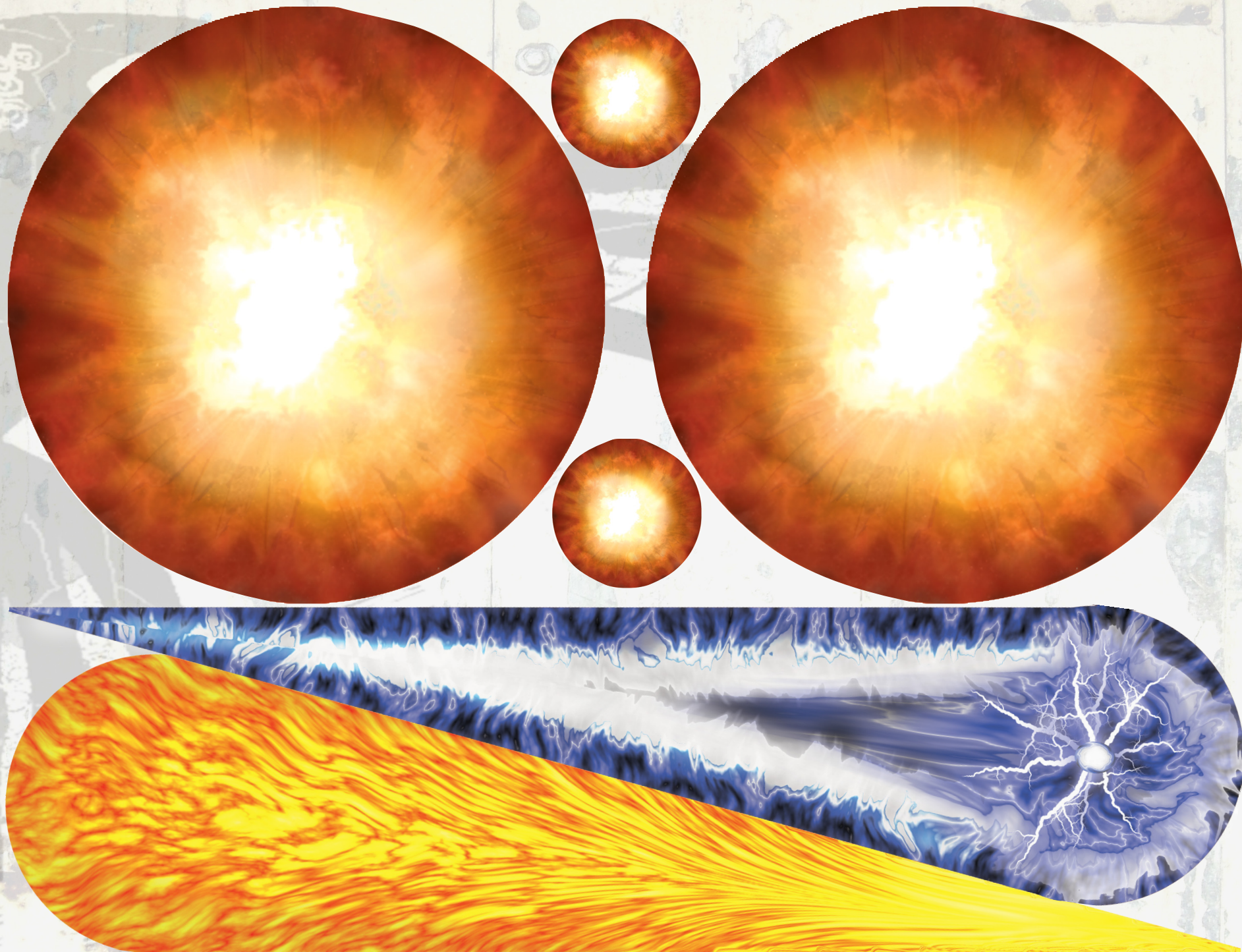
Because people in the US and people in Europe use different standard sizes of paper it is not possible to make a book which will look perfect on both paper sizes. Most of the time this will not be a problem as the printer will simply change the dimensions of the pages to fit your paper. However it does become a problem with these blast templates which are supposed to have a fixed size.

When printing the blast templates it is important that you make sure the printer doesn't resize the page. You can choose to print these pages separately from the rest of the document to solve the problem. Simply enter the printer options and select the printer to print pages 53 and 55.

The printer drivers should have an option which allows you to toggle whether the printer will try to resize the document or not. set this to "no resizing/scaling" and tell the printer to center the document on the paper. The printer will probably then tell you that some areas of the page will not be printed. Click "Ok" - some of the borders of the document will be missing but your blast templates should be allright ready to stick onto a piece of cardboard.

If your printer allows it you could also try and print the templates on pieces of heavy cardboard or even plasticard for extra durability but check you printer manual first.











## Appendix E: Example Army Cards

**SPACE MARINE TACTICAL COMPANY**

A Space Marine tactical company consists of 1 HQ unit plus 3 tactical detachments. Each tactical detachment consists of 6 Space Marine stands and 3 Rhinos. The HQ unit consists of 1 Space Marine command stand and 1 Rhino. Each Rhino carries two stands.

HQ UNIT + Tactical Detachment 1 Tactical Detachment 2 Tactical Detachment 3

POINTS VALUE 750

**SPACE MARINE TACTICAL COMPANY**

**BREAK POINT 15:** The Space Marine tactical company is broken once it has lost 15 models, either Space Marine stands or Rhinos. Once the company is broken each detachment must take an individual morale check.

**MORALE VALUE 2:** Space Marines have a morale value of 2. They must roll 2 or more on a D6 to pass their morale check.

The HQ unit never checks morale, even if the company is broken. Any Space Marine or Imperial Guard unit within 10cm may add +1 to its morale check dice roll. This means Space Marine detachments automatically pass their morale check if their HQ unit is within 10cm.

**VICTORY POINTS 8**  
Your opponent gains 8 VPs when the company is broken

**SPACE MARINE TACTICAL COMPANY**

HQ UNIT

TACTICAL DETACHMENT 1

TACTICAL DETACHMENT 2

TACTICAL DETACHMENT 3

POINTS COST 750

**SPACE MARINE TACTICAL COMPANY**

**BREAK POINT: 15**  
**MORALE VALUE: 2**

Unit	Move	Save	Caf
Hq	10 cm	6+	+4
Tactical	10 cm	6+	+2
Rhino	25 cm	4+	0

Weapons	Range	Attack Dice	To hit
Bolt pistol	25 cm	2	5+
Bolter	50 cm	1	5+
Bolter	15 cm	1	6+

Save Modifier	Notes
0	Command unit
0	
0	Carries two stands

**VICTORY POINTS 8**

This is one of the original Games Workshop Space Marine Army Cards. It gives the unit name and shows the models you get, and breaks them down by detachment. In this case, a Veteran Company comes with an HQ detachment of a Rhino and an HQ stand, and three detachments of three Rhinos and six Veteran Marine stands each. The back (the right-hand image) details the Break Point, Morale and Victory Point Value of the unit.

This is an Army Card from NetEpic 4. The front again details the detachments you get, and include photographs of the models. The back of the card gives detailed information about the unit stats, Armour and weapons. This is useful during a game as it eliminates the need to constantly reference a rulebook.

**Adeptus Astartes 6<sup>th</sup> Company**

**Tactical Company**

1 Marine HQ stand & Command Rhino  
6 Tactical Marine stands & 3 Rhinos  
6 Tactical Marine stands & 3 Rhinos  
6 Tactical Marine stands & 3 Rhinos

Move	Save	CAF	Range	Shoot
<b>Marine HQ</b>				
10cm	4+/f6+	+4	25cm	2d 5+ (0)
Command, Elite, HQ, Inspirational				
<b>Tactical Marine</b>				
10cm	5+	+2	50cm	1d 5+ (0)
<b>Rhino (vehicle, transport 2)</b>				
25cm	4+	+0	15cm	1d 6+ (0)

**750 Points**

Break	Morale	VP
15	2	8

This is one of the many cards that have been created for NetEpic 5. It manages to squeeze the complete unit information onto one side, though the abbreviations are a little obscure, and it is sized to fit into a regular CCG protective sleeve. There are no pictures to aid in choosing models, but since the back is blank it may be used as part of one of the hidden setup systems: players alternate laying out their Army Cards face-down, then turn them all face-up and place the appropriate models where the cards are.



## Credits

Peter Ramos:

Jarreas Underwood:

Chistian Salling:

Ferran Clavero:

Peter Laycock:

Tom Webb:

NetEpic Discussion Group:

NetEpic

Coordinator

Editor

Layout/CGI

Illustrations

Illustrations

Webmaster

Content



# Glossary

Ally	If you may buy units from two army lists, the smaller force is an ally to the larger.
Armour Save	Roll this number or more on a D6 to survive being hit. Buildings roll 2D6 and add.
Army	All the units a player bring to the table.
Army Card	A playing-card-sized representation of a group of models.
Attack Dice	The number of D6's rolled when attacking with a ranged weapon.
Barrage	A template weapon that uses a 6 cm diameter template.
Battery	A detachment of artillery or anti-aircraft vehicles.
Break Point, Broken	When enough of the models that come with an Army Card have been killed, the unit is no longer considered to be an effective fighting force, and 'broken'.
Close Assault Factor (CAF)	This represents how good the unit is in Close Combat.
Close Combat (CC)	Hand-to-hand melee combat. Roll 2D6 and add CAF: loser dies, no Armour Save.
Codex Army	An army that has special units and special rules.
Coherency	Units within a detachment must remain within 6 cm of each other.
Detachment	A group of models that compose a fighting group, made up of one or more models.
Distance	NetEpic uses the metric system and all distances are in centimeters.
Flier	Units such as airplanes and helicopters that can fly high into the sky.
Floater	An intermediate type of unit between flyers and skimmers.
Fixed Armour Save	This is an Armour Save that is not modified by a weapon's Target Save Modifier.
Immobilized	The unit cannot move. If engaged in CC, don't roll 2D6 and only use the base CAF.
Indirect Barrage	Artillery may fire at targets that it can't see, but will scatter 2D6 cm.
Morale, Morale Test	This is how disciplined the unit is. Roll this number or more on a D6 to pass.
Move	How far a model may move.
Off-Board Barrage	An attack fired by a remote or orbital unit not actually on the table.

Pin, Pinning Class	A measure of how large a model is, and whether it can move away from CC or not.
Platoon	An infantry detachment.
Pop-Up Attack	Skimmers that are hiding behind cover can suddenly gain altitude ("pop-up"), take a shot, then drop back out of sight before anything can shoot back.
Psychic Power, Physical	These powers represent a force that causes physical damage. They work as normal firing weapons and possess To-Hit scores, a TSM and require line of sight.
Psychic Power, Ethereal	These powers do not create a physical force to deal damage. They bypass Armour and shields and can only be avoided if the target has a Psychic Save.
Rally	An attempt to stop running away and get a detachment back into the fight.
Range	How far the unit's weapons reach. There are no penalties for range.
Re-Roll	A die may never be re-rolled more than once – the second result must be used.
Rout	If a unit on Fall Back Orders fails morale check, it is destroyed.
Scatter	Randomly moving away from where you wanted something to go. Roll the scatter die and 2D6 for distance. A "bullseye" result indicates there is no deviation.
Scatter Dice, Titan	Two dice with four blank, and either "Up" & "Down" or "Left" & "Right" faces.
Skimmer	An anti-gravity or vectored thrust vehicle that moves just above the ground.
Snap Fire	Firing at a target of opportunity during the movement phase.
Squad	A detachment of cavalry or walker-class units.
Squadron	A detachment of vehicles or Flyers.
Standard Army	An army list made of common and readily available troops.
Stand	A single base with one or more models attached to it.
Template Weapons	These are area of effect weapons. Roll To-Hit all models underneath the template.
To-Hit Roll	Roll this number or more on a D6 to lay the smack down on your target.
Target Save Modifier (TSM)	How well a weapon punches through Armour. Apply as a penalty to an Armour Save.
Unit	A generic term used to refer to a related group of models.
Victory Points	A measure of how close to winning a player is.



# General tips for printing this book

NetEpic Gold was designed so that it can be printed both at home and at a store. When we made the layout for this book a number of things had to be taken into consideration.

1: Since NetEpic is web based we wanted the book to be easy to read on screen as well as paper. With laptops and handy netbooks becoming increasingly common you may not even want to print Netepic Gold, but simply have the pdf files on you netbook for easy access during the game. This is the reason for the horizontal layout instead of a more common vertical layout.

2: For home print we know that Ink consumption is always an issue. We wanted NetEpic Gold to be as good looking as possible but we've also tried to save on the ink wherever we could. If you feel that the ink consumption for printing 60 pages would be too great you can print the regular NetEpic v. 5.0 which is essentially the same text without the images and layout.

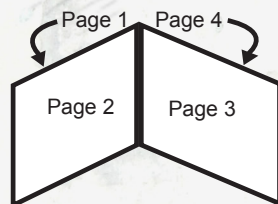
3: Colours: This is a technical issue which most people won't have to worry about. This book is made in RGB colour which is standard for on screen use and most home printers are calibrated to compensate for this. However you might find that the people at a professional printer won't be too happy about this if you want your book printed that way. This is because they use a color system called CMYK which works slightly differently. Again: for most people this won't be an issue.

## Paper:

If you're going to spend the ink on printing the book then do yourself the favour of buying some good quality paper. This makes text and images look sharper and it also enhances the durability of your book.

## The Printer

Inkjets are cheapest to buy but often also produce the fuzziest images -especially on poor quality paper. Use good paper for the best result. Color Laser printers are more expensive but may be a better option if you want to save on ink. 60 pages is still a lot to print.



## Printing:

As already described in Appendix D there's an issue of standard paper sizes which is different in Europe and the US. We recommend that you simply make sure the printer scales the document to fit your paper.

## Printing duplex:

Duplex means printing on both sides of a piece of paper. To do this you go into the printing options and select the computer to print only odd or even pages. Also make sure you set the printer options to center your document on the paper so both sides of the paper align when/if you cut it out. It is important to place the individual pages correctly in the printer when printing on the other side. You should do some quick tests first if you're not completely sure how to place them. Also it may be a good idea to use fairly heavy paper so the pages doesn't look too transparent.

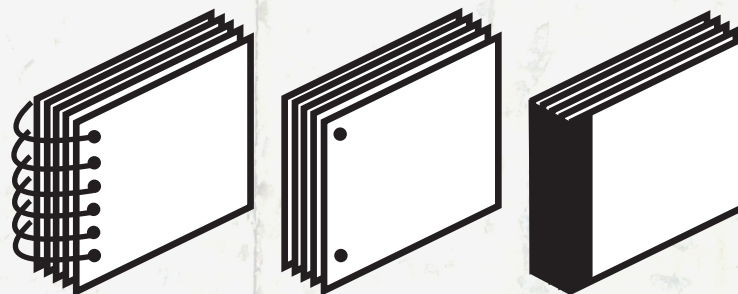
## Binding the book

Again you have several options. We've made the pages so that you can glue them in the back or punch some holes and place it in a ring binder. Of course you need a specially shaped one but these should be available from most well assorted book- or paper stores.

Alternatively you could simply print everything normally and place them in plastic pockets in a regular binder.

We're going to add a special "Covers" pdf to the EpiCentre. Here you'll find various logos and covers you can print out and use with your book.

Finally the option which will probably give the best result is to have the book made at Kinko's or some similar printing service. These places usually also have various options for binding the book. Again you should probably ask to see what options they have available. Some may be more expensive than others.



Examples on how to bind your book













GOLD

NetEpic Gold - A Nexus Publication  
©2009 [www.netepic.org](http://www.netepic.org) - All rights reserved